

York Grove, Peckham

£699,950



Who doesn't love a garden flat? This deftly-extended long-leased Victorian one with two double bedrooms is a scrummy example.

Your new pad is 760 square feet and delivers direct access to the low-maintenance west-facing garden (from your reception room, and there is also gated street access from neighbouring Dayton Grove). Parking is unrestricted on the street.

This is a notably quiet spot (York Grove is a no-through-street) yet you are really close to all of the action, and winning-at-life close to Queens Road Peckham Station: just four minutes by foot! For regular rail and Windrush line services. You are also a mere 15 minute walk from both Nunhead Station and Peckham Rye Station, and from Nunhead's high street area and Rye Lane.

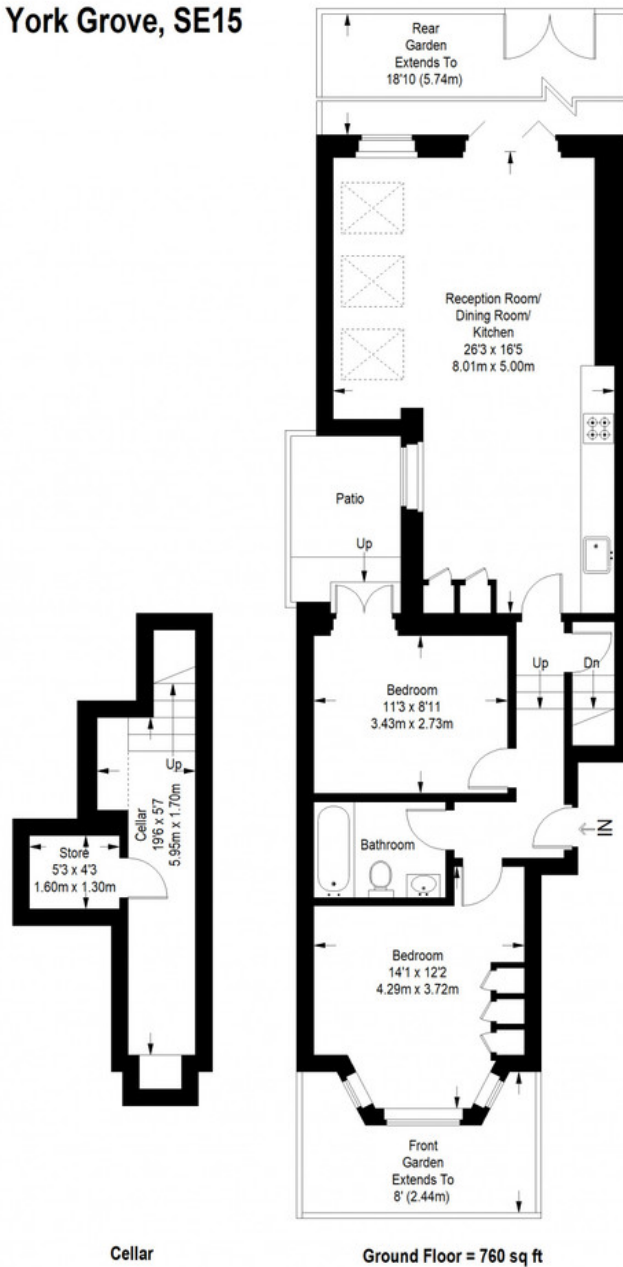
MUNDAY'S



Munday's Estate Agents Ltd.
2 Mary Boast Walk
London SE5 8SP
020 3318 8900

www.mundays.com

York Grove, SE15



Approximate Gross Internal Area
GROUND FLOOR = 760 sq ft / 70.60 sq m
(EXCLUDING CELLAR)
Total = 760 sq ft / 70.60 sq m



This plan is for layout guidance only. Not drawn to scale unless stated. Windows and door openings are approximate. Whilst every care is taken in the preparation of this plan, please check all dimensions, shapes and compass bearings before making any decisions reliant upon them. (ID357409)