

MUNDAY'S

Wyleu Street, Honor Oak

£600,000



Offers in excess of £600,000.

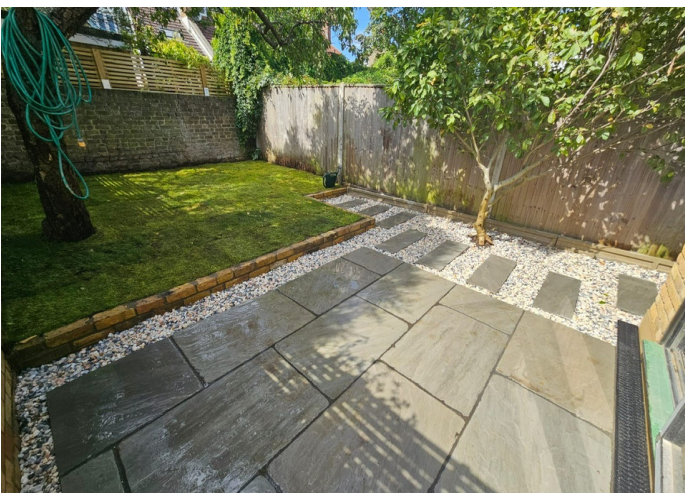
Glorious garden flat alert! Feast your eyes on this fabulous extended and renovated two bedroom ground floor Victorian conversion pad, with direct access - from one of your two double bedrooms - onto the sunny west-facing garden.

This is a quiet residential side-street but you are so well-placed and connected! Honor Oak's high street area is just a couple of minutes away (at the end of the street) and Honor Oak Park Station is a five minute stroll; for both regular and Overground services.

Munday's Estate Agents Ltd.
2 Mary Boast Walk
London SE5 8SP
020 3318 8900

www.mundays.com

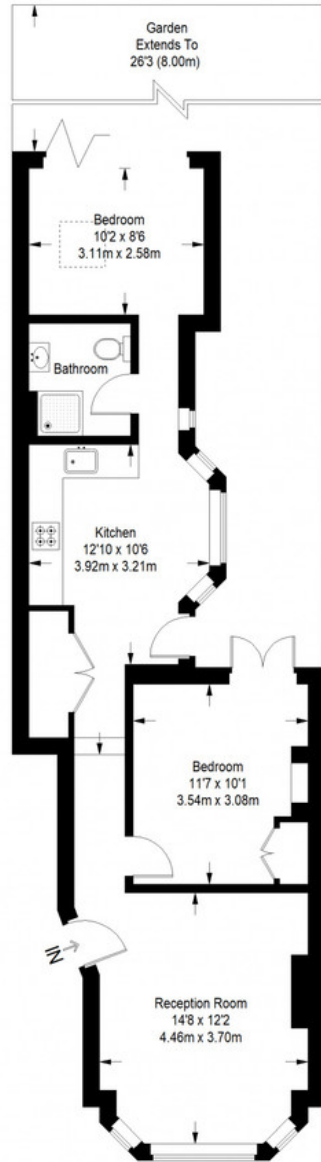
MUNDAY'S



Munday's Estate Agents Ltd.
2 Mary Boast Walk
London SE5 8SP
020 3318 8900

www.mundays.com

Wyleu Street



Ground Floor = 632 sq ft

Approximate Gross Internal Area
GROUND FLOOR = 632 sq ft / 58.71 sq m
Total = 632 sq ft / 58.71 sq m



This plan is for layout guidance only. Not drawn to scale unless stated. Windows and door openings are approximate. Whilst every care is taken in the preparation of this plan, please check all dimensions, shapes and compass bearings before making any decisions reliant upon them. (ID357409)