

Willow Way, Upper Sydenham

£399,950



Offers in excess of £399,950.

Roomy, thoroughly and recently-renovated two double bedroom second floor modern-build apartment of 783 square feet. Smart double-glazing throughout, a cute private balcony, a large communal roof terrace and a secure designated parking bay (within the building) seal the deal.

Walk just eight minutes to Sydenham Station, or 12 to Forest Hill (both offer regular and Windrush line services). You also have great (24hr) bus services from outside the flat into Covent Garden/central London.

Sydenham High Street, Kirkdale, and Forest Hill's Dartmouth Road are all close for cafes, shops, social spots and amenities. Walk 15 minutes to Horniman Museum and Gardens. It is a five minute walk to Wells Park and 15 to Crystal Palace Park.

MUNDAY'S

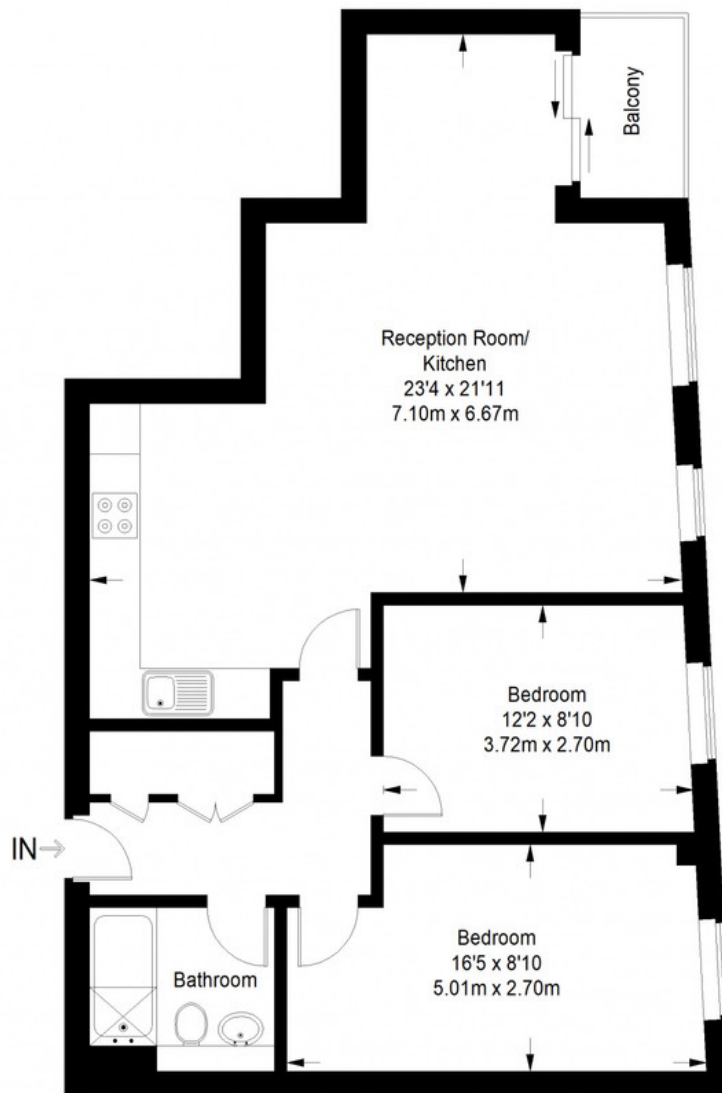


*Munday's Estate Agents Ltd.*  
2 Mary Boast Walk  
London SE5 8SP  
020 3318 8900

[www.mundays.com](http://www.mundays.com)

**MUNDAY'S**

## Willow Way



**Second Floor = 783 sq ft**

Approximate Gross Internal Area  
SECOND FLOOR = 783 sq ft / 72.74 sq m  
Total = 783 sq ft / 72.74 sq m



This plan is for layout guidance only. Not drawn to scale unless stated. Windows and door openings are approximate. Whilst every care is taken in the preparation of this plan, please check all dimensions, shapes and compass bearings before making any decisions reliant upon them. (ID357409)

*Munday's Estate Agents Ltd.*  
2 Mary Boast Walk  
London SE5 8SP  
020 3318 8900

[www.mundays.com](http://www.mundays.com)