

Webster Road, Bermondsey

£499,950



Chain-free two bed, two bath flat, with private balcony and a designated secure parking space - on the first floor of a modern block which is delightfully close to Bermondsey tube station (walk just three minutes). You're also close to Southwark Park and King's Stairs Gardens - right on the river.

The flat is double-glazed throughout and has modern fittings to the kitchen and bath and shower rooms.

MUNDAY'S

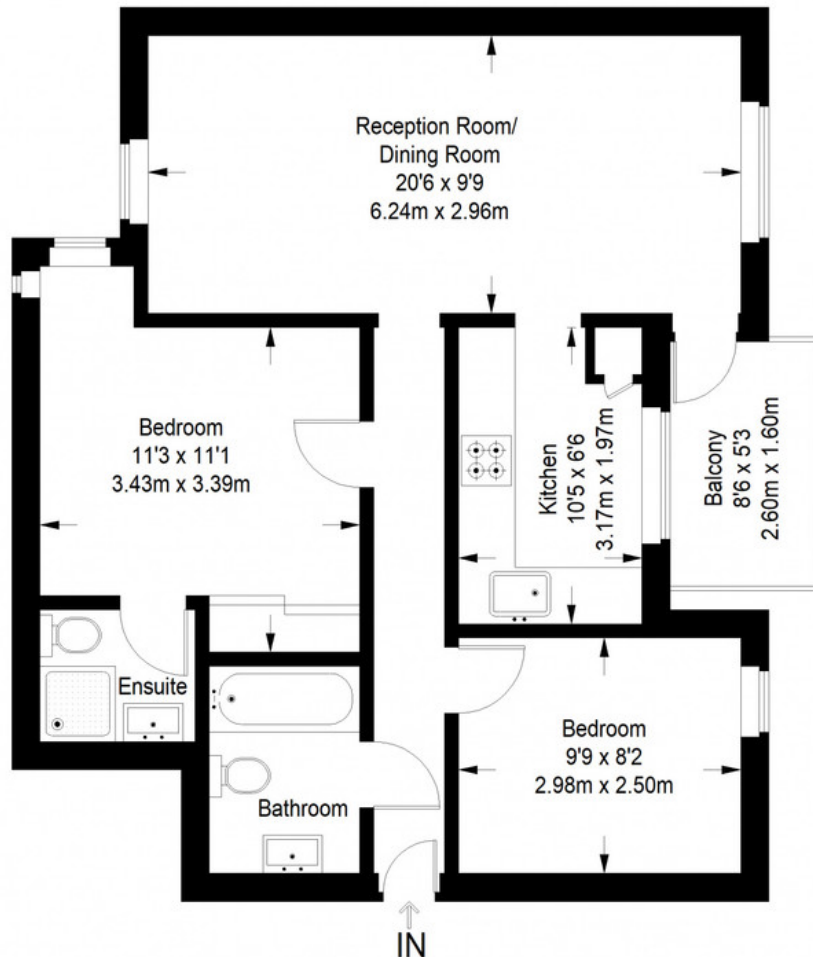


Munday's Estate Agents Ltd.
2 Mary Boast Walk
London SE5 8SP
020 3318 8900

www.mundays.com

MUNDAY'S

Wesley Court



First Floor = 620 sq ft

Approximate Gross Internal Area
FIRST FLOOR = 620 sq ft / 57.60 sq m
Total = 620 sq ft / 57.60 sq m



This plan is for layout guidance only. Not drawn to scale unless stated. Windows and door openings are approximate. Whilst every care is taken in the preparation of this plan, please check all dimensions, shapes and compass bearings before making any decisions reliant upon them. (ID357409)

Munday's Estate Agents Ltd.
2 Mary Boast Walk
London SE5 8SP
020 3318 8900

www.mundays.com