

MUNDAY'S

Ventnor Road, New Cross

£895,000



Smart and very charming three bedroom mid-terrace three bedroom Victorian house of 1085 square feet (excluding the useful and easily-accessible cellar), with a fabulous pro-landscaped garden (by London Clay) of nearly 50 feet. Other treats include recently fitted double-glazed sash windows (Greenwich Joinery) and wool and sisal carpets (Lordship Flooring).

You are just a nine minute walk from New Cross Gate Station. And only four from Hatcham Primary School (highly-regarded and a feeder school to the excellent local associated secondary; Haberdasher's Hatcham College).

Munday's Estate Agents Ltd.
2 Mary Boast Walk
London SE5 8SP
020 3318 8900

www.mundays.com

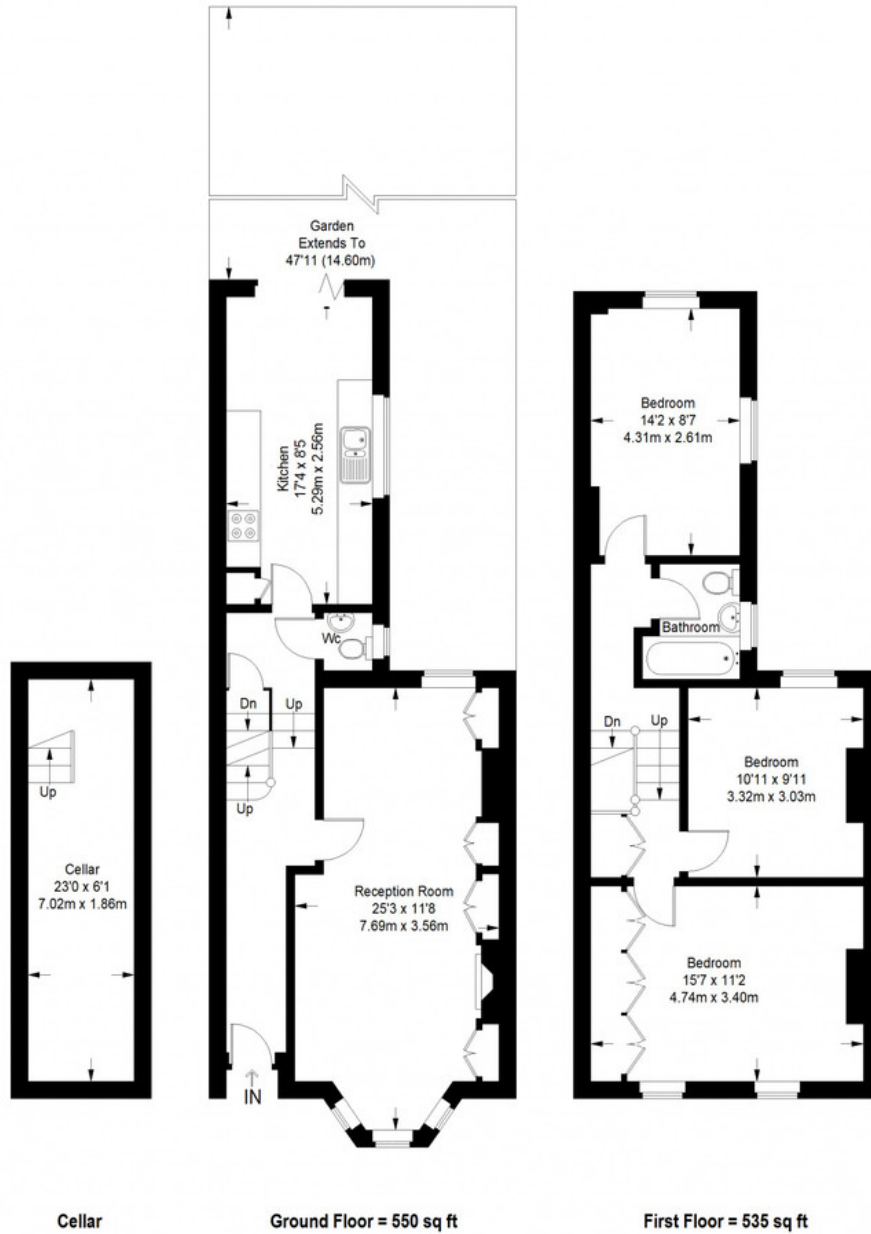
MUNDAY'S



Munday's Estate Agents Ltd.
2 Mary Boast Walk
London SE5 8SP
020 3318 8900

www.mundays.com

Ventnor Road



Approximate Gross Internal Area
 GROUND FLOOR = 550 sq ft / 51.10 sq m
 FIRST FLOOR = 535 sq ft / 49.70 sq m
 Total = 1085 sq ft / 100.80 sq m



This plan is for layout guidance only. Not drawn to scale unless stated. Windows and door openings are approximate. Whilst every care is taken in the preparation of this plan, please check all dimensions, shapes and compass bearings before making any decisions reliant upon them. (ID357409)