

Vauxhall Grove, Vauxhall

£515,000



A delightful double bedroom Victorian conversion flat on the ground floor of a tall red-brick townie, with its own low-maintenance courtyard garden. Chain free.

Welcome features include smart herringbone flooring (in the reception and bedroom), high ceilings, and a fresh and neutral decorative scheme.

Pleasingly, you are really close to Bonnington Square: an incredible and magical hidden gem (saved from redevelopment in the seventies). This is a genuine oasis, boasting two beautiful community gardens: Bonnington Square Pleasure Gardens and Harleyford Road Community Garden.

MUNDAY'S

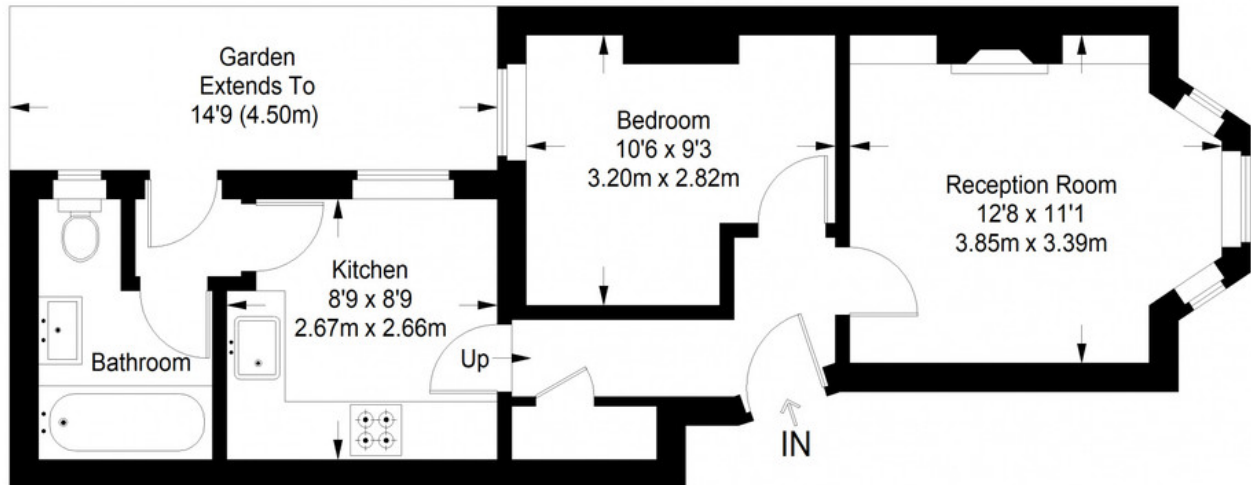


Munday's Estate Agents Ltd.
2 Mary Boast Walk
London SE5 8SP
020 3318 8900

www.mundays.com

MUNDAY'S

Vauxhall Grove



Ground Floor = 427 sq ft

Approximate Gross Internal Area
GROUND FLOOR = 427 sq ft / 39.67 sq m
Total = 427 sq ft / 39.67 sq m



This plan is for layout guidance only. Not drawn to scale unless stated. Windows and door openings are approximate. Whilst every care is taken in the preparation of this plan, please check all dimensions, shapes and compass bearings before making any decisions reliant upon them. (ID357409)