

MUNDAY'S

Upper Brockley Road, Brockley

£1,295,000



Architecturally-treated (by local and lauded architects: Selencky Parsons) four bedroom Victorian townhouse of 1748 square feet, delivered over three full floors, with a two-storey rear extension - with lightweight sustainable microcement bands teamed with untreated Siberian Larch battened panels). A sunny garden with a southeasterly orientation of over 65 feet completes the offering. Chain free.

Find your new home within leafy Brockley Conservation Area, opposite Myatt Garden Primary School. Walk 10-15 minutes for Brockley, New Cross and St Johns stations.

Munday's Estate Agents Ltd.
2 Mary Boast Walk
London SE5 8SP
020 3318 8900

www.mundays.com

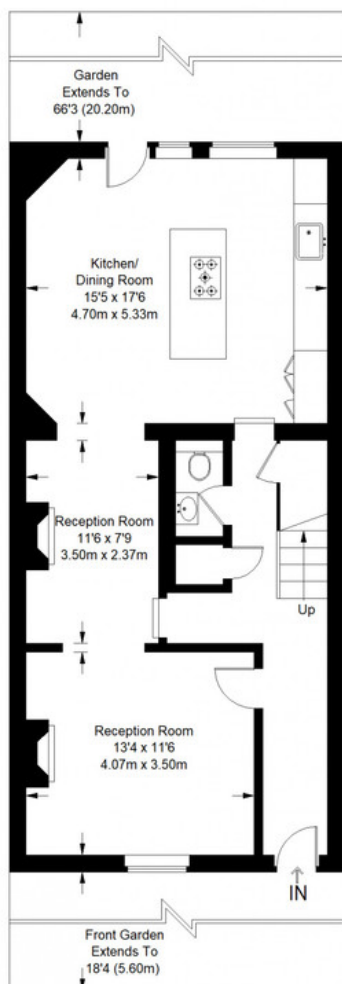
MUNDAY'S



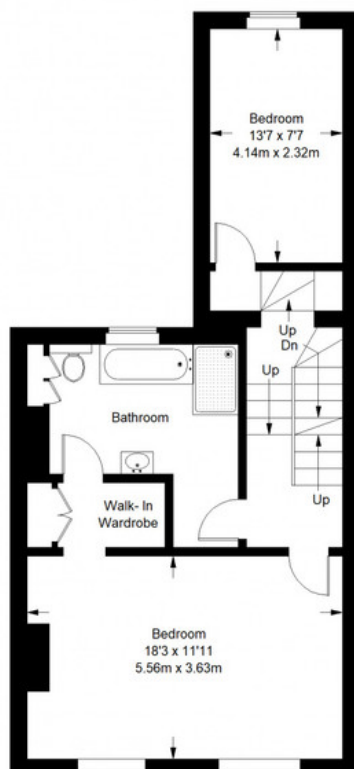
Munday's Estate Agents Ltd.
2 Mary Boast Walk
London SE5 8SP
020 3318 8900

www.mundays.com

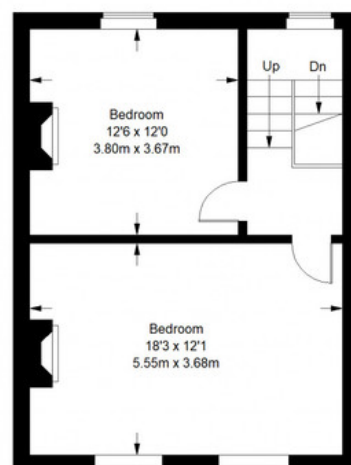
Upper Brockley Road



Ground Floor = 712 sq ft



First Floor = 585 sq ft



Second Floor = 451 sq ft

Approximate Gross Internal Area
 GROUND FLOOR = 712 sq ft / 66.14 sq m
 FIRST FLOOR = 585 sq ft / 54.35 sq m
 SECOND FLOOR = 451 sq ft / 41.90 sq m
 Total = 1748 sq ft / 162.39 sq m



This plan is for layout guidance only. Not drawn to scale unless stated. Windows and door openings are approximate. Whilst every care is taken in the preparation of this plan, please check all dimensions, shapes and compass bearings before making any decisions reliant upon them. (ID357409)