

Upland Road, East Dulwich

£850,000



Large, light, lovely and chain free three double bedroom deftly-extended Victorian conversion apartment - on upper floors - with a Freehold-share, both bath and shower rooms, wooden floors and a private roof terrace as the many cherries on top! Oh, and a new roof!

The flat measures in at 1064 square feet - enjoy the space that a standard whole Victorian terrace house offers.

The location is a delightful tree-lined residential Dulwich street, with little through-traffic, just a 10 minute stroll from Lordship Lane and North Cross Road.

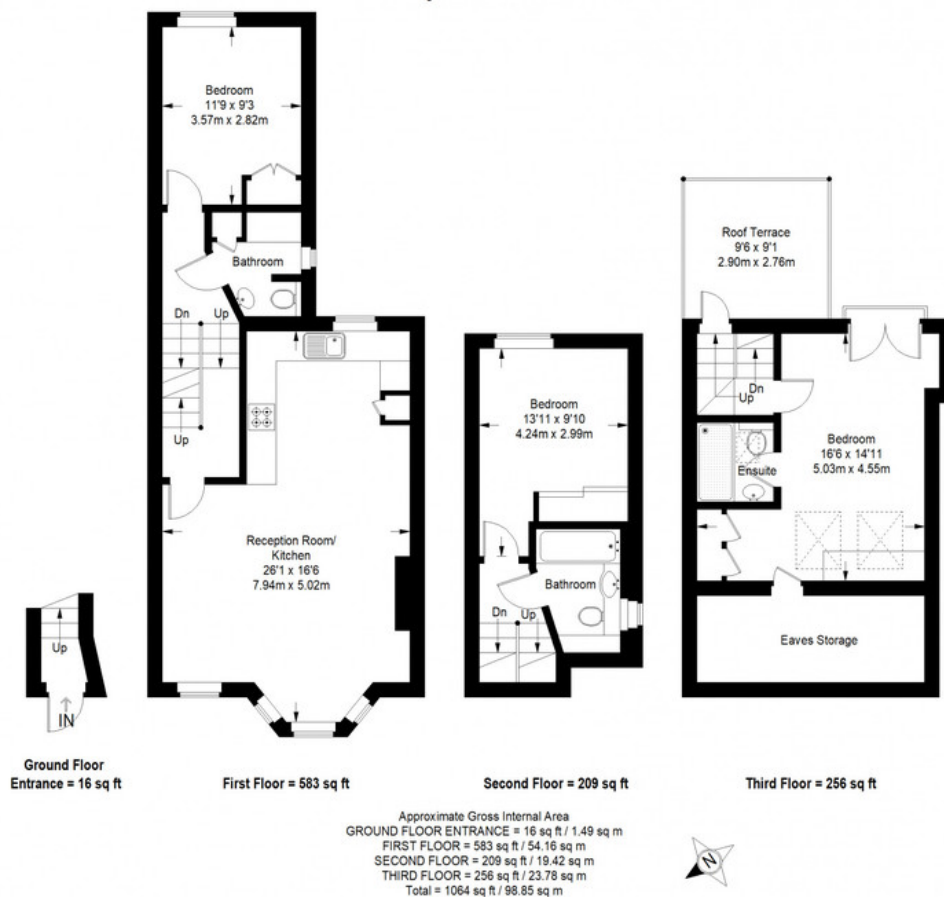
MUNDAY'S



Munday's Estate Agents Ltd.
2 Mary Boast Walk
London SE5 8SP
020 3318 8900

www.mundays.com

Upland Road



This plan is for layout guidance only. Not drawn to scale unless stated. Windows and door openings are approximate. Whilst every care is taken in the preparation of this plan, please check all dimensions, shapes and compass bearings before making any decisions reliant upon them. (ID357409)