

MUNDAY'S

Tyrwhitt Road, Brockley

£625,000



Beautiful and bright two double bedroom first floor conversion apartment of 754 square feet, within a large bay-fronted Victorian semi, with a Freehold-share and a large (east-facing) shared garden and side access. Chain free.

Find the delightful pad in a leafy and particularly quiet residential spot, within Brockley Conservation Area - just a one minute walk from Hilly Fields park, 10 minutes from St Johns Station, and 14 from Brockley Station. Parking is currently unrestricted on this and neighbouring streets.

*Munday's Estate Agents Ltd.*  
2 Mary Boast Walk  
London SE5 8SP  
020 3318 8900

[www.mundays.com](http://www.mundays.com)

MUNDAY'S

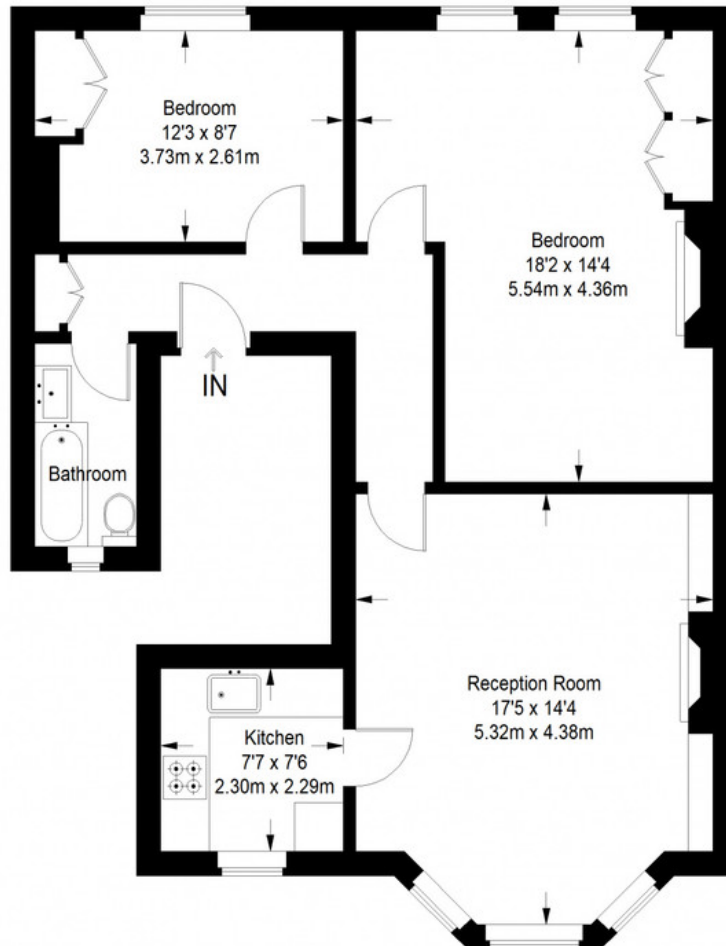


Munday's Estate Agents Ltd.  
2 Mary Boast Walk  
London SE5 8SP  
020 3318 8900

[www.mundays.com](http://www.mundays.com)

**MUNDAY'S**

## Tyrwhitt Road



**First Floor = 754 sq ft**

Approximate Gross Internal Area  
FIRST FLOOR = 754 sq ft / 70.05 sq m  
Total = 754 sq ft / 70.05 sq m



This plan is for layout guidance only. Not drawn to scale unless stated. Windows and door openings are approximate. Whilst every care is taken in the preparation of this plan, please check all dimensions, shapes and compass bearings before making any decisions reliant upon them. (ID357409)

*Munday's Estate Agents Ltd.*  
2 Mary Boast Walk  
London SE5 8SP  
020 3318 8900

[www.mundays.com](http://www.mundays.com)