

MUNDAY'S

Trundle Street, Borough

£2,795,000



Incredible five bedroom penthouse apartment with wow-factor vistas (taking in most of the London skyline's landmarks - north to the city and west to the Southbank) from a life-enhancing wraparound private roof terrace. Find your new home within Lantern Apartments SE1, by KMK Architects of Lambeth Walk.

The location is also top! You are right by Mint Street Park, just four minutes by foot from Borough Underground Station, 10 minutes from Borough Market, Southwark Cathedral and Tate Modern, and 14 from London Bridge Station and The Shard.

One of just 16 homes in the iconic boutique development, this big, bright and genuinely unique abode - pleasingly entered directly by lift - is delivered over two floors and 2448 square feet. The current owners have carried out smart, sensitive and extensive internal renovations during their occupancy, paying particular and welcome attention to custom-made fitted storage throughout (residents also have storage at basement level), and there is enormous flexibility in how you use the multiple rooms on your largest floor.

Munday's Estate Agents Ltd.
2 Mary Boast Walk
London SE5 8SP
020 3318 8900

www.mundays.com

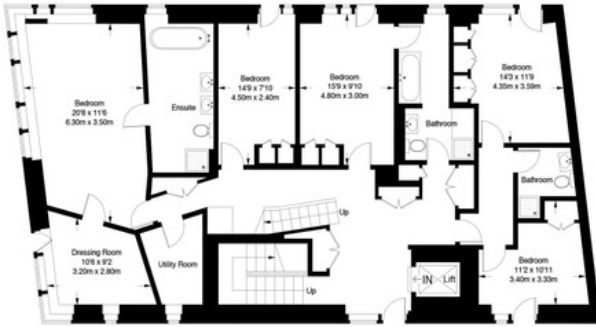
MUNDAY'S



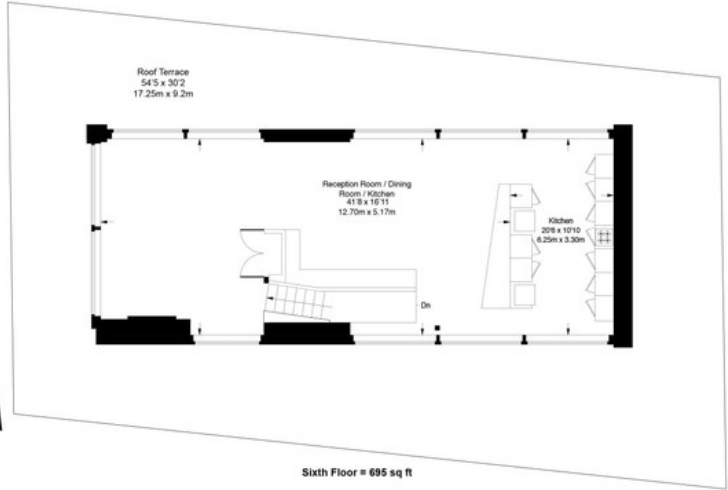
Munday's Estate Agents Ltd.
2 Mary Boast Walk
London SE5 8SP
020 3318 8900

www.mundays.com

Trundle Street



Fifth Floor = 1753 sq ft



Sixth Floor = 695 sq ft

Approximate Gross Internal Area
FIFTH FLOOR = 1753 sq ft / 162.83 sq m
SIXTH FLOOR = 695 sq ft / 64.58 sq m
Total = 2448 sq ft / 227.41 sq m



This plan is for layout guidance only. Not drawn to scale unless stated. Windows and door openings are approximate. Whilst every care is taken in the preparation of this plan, please check all dimensions, shapes and compass bearings before making any decisions reliant upon them. (E0557406)