

MUNDAY'S

Tressillian Road, Brockley

£650,000



Architecturally-treated raised ground floor Victorian conversion apartment with a Freehold-share, and a great layout which delivers two double bedrooms and well-considered bespoke hand-built storage throughout.

The du moment location is Brockley Conservation Area. Where leafy and pretty residential streets are the order of the day.

You are an under one minute walk from beautiful Hilly Fields Park. You are ~10 minutes by foot from Brockley, Crofton Park and St Johns rail stations. Ladywell Station and Lewisham station are also within walking distance. Parking is unrestricted, on the street.

Munday's Estate Agents Ltd.
2 Mary Boast Walk
London SE5 8SP
020 3318 8900

www.mundays.com

MUNDAY'S

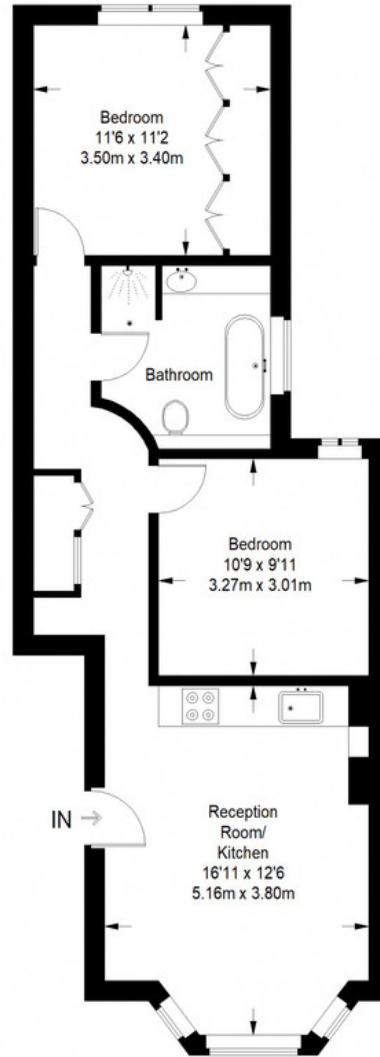


Munday's Estate Agents Ltd.
2 Mary Boast Walk
London SE5 8SP
020 3318 8900

www.mundays.com

MUNDAY'S

Tressillian Road SE4



Ground Floor = 632 sq ft

Approximate Gross Internal Area
GROUND FLOOR = 632 sq ft / 59 sq m
Total = 632 sq ft / 59 sq m

This plan is for layout guidance only. Not drawn to scale unless stated. Windows and door openings are approximate. Whilst every care is taken in the preparation of this plan, please check all dimensions, shapes and compass bearings before making any decisions reliant upon them. (ID357409)

Munday's Estate Agents Ltd.
2 Mary Boast Walk
London SE5 8SP
020 3318 8900

www.mundays.com