

Tressillian Road, Brockley

£450,000



Classy and characterful one bedroom conversion apartment on the raised ground floor of a tall semi-detached Victorian townie. A sunny southeasterly-facing private balcony plus communal garden complete the offering.

The location also packs a punch. You are sitting pretty in lovely and leafy Brockley Conservation Area, close to Brockley Market (held on Saturdays 10-2 in Lewisham College's walled car park) and to Hilly Fields in the other direction.

For stations, St John's is a three minute stroll, or saunter to Brockley or Lewisham stations in 15. All are Zone 2.

MUNDAY'S

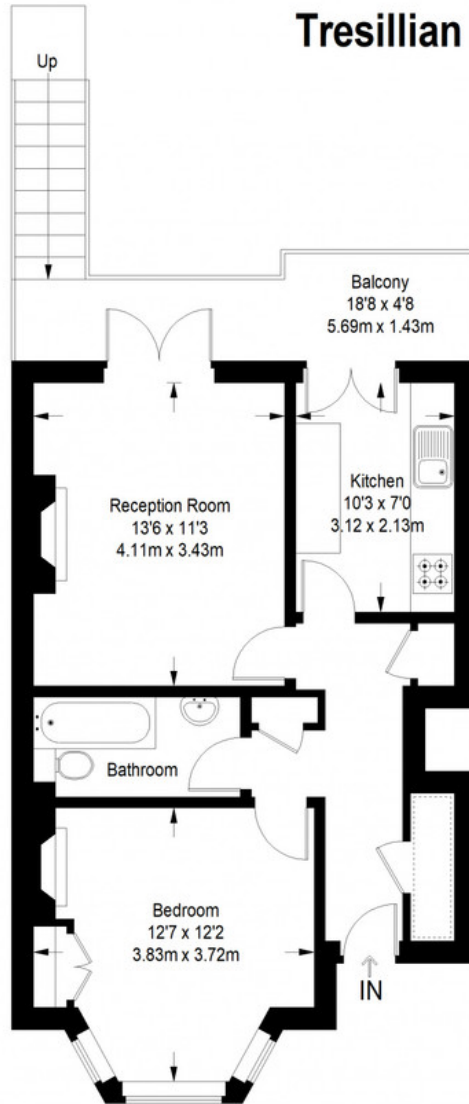


Munday's Estate Agents Ltd.
2 Mary Boast Walk
London SE5 8SP
020 3318 8900

www.mundays.com

MUNDAY'S

Tresillian Road



Ground Floor = 519 sq ft

Approximate Gross Internal Area
GROUND FLOOR = 519 sq ft / 48.22 sq m
Total = 519 sq ft / 48.22 sq m



This plan is for layout guidance only. Not drawn to scale unless stated. Windows and door openings are approximate. Whilst every care is taken in the preparation of this plan, please check all dimensions, shapes and compass bearings before making any decisions reliant upon them. (ID357409)

Munday's Estate Agents Ltd.
2 Mary Boast Walk
London SE5 8SP
020 3318 8900

www.mundays.com