

Therapia Road, East Dulwich

£650,000



A delightful ground floor period garden flat with three points of access to the garden (internally from both the kitchen and from the principal bedroom, and externally via a side gate), a Freehold-share, and its own front door to the side of the semi-detached building.

There is first come, first served parking for two cars (for the three flats), and further parking is unrestricted on this and neighbouring roads.

Find your new wide and tree-lined street just five minutes by foot from Peckham Rye Park and Common's glorious 113 acres. Walk 10-15 minutes to Honor Oak Park Station for regular and Overground services, or to the end of the road for good bus routes. Useful local shops and cute cafes and delicatessens are in their many on nearby Forest Hill Road.

MUNDAY'S

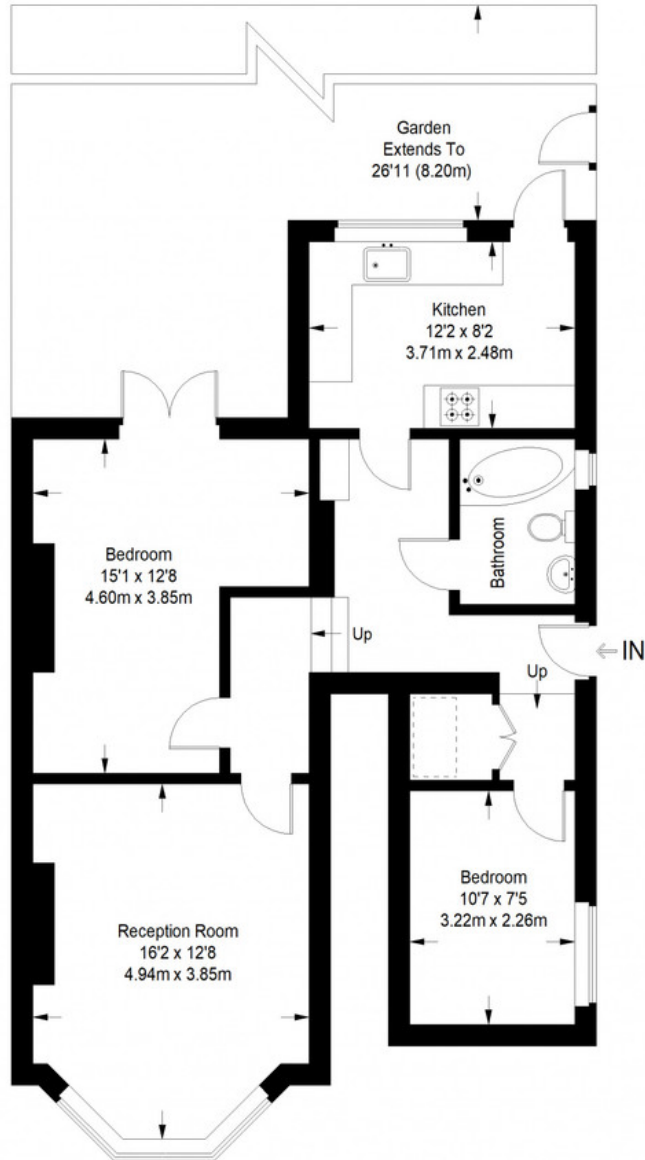


Munday's Estate Agents Ltd.
2 Mary Boast Walk
London SE5 8SP
020 3318 8900

www.mundays.com

MUNDAY'S

Therapia Road, SE22



Ground Floor = 752 sq ft

Approximate Gross Internal Area
GROUND FLOOR = 752 sq ft / 70 sq m
Total = 752 sq ft / 70 sq m



This plan is for layout guidance only. Not drawn to scale unless stated. Windows and door openings are approximate. Whilst every care is taken in the preparation of this plan, please check all dimensions, shapes and compass bearings before making any decisions reliant upon them. (ID357409)

Munday's Estate Agents Ltd.
2 Mary Boast Walk
London SE5 8SP
020 3318 8900

www.mundays.com