

The Woodlands, Hither Green

£950,000



Bask in open-plan California vibes with this huge 1970's semi-detached house of 1871 square feet, inclusive of an integral garage (we know - tough to find!).

The dreamy home has both bath and shower rooms plus an additional w.c. You also have plentiful storage, a front drive to park your wheels upon, and an enormous rear garden - which is laid to lawn and framed by mature trees.

Your new large and light house is pleasingly close to Mountsfield Park (with community garden and cafe - walk one minute!).

And for rail travel, walk just 12 minutes to Hither Green Station (or grab a bus down the road). Further, there are good local schools within easy walking distance.

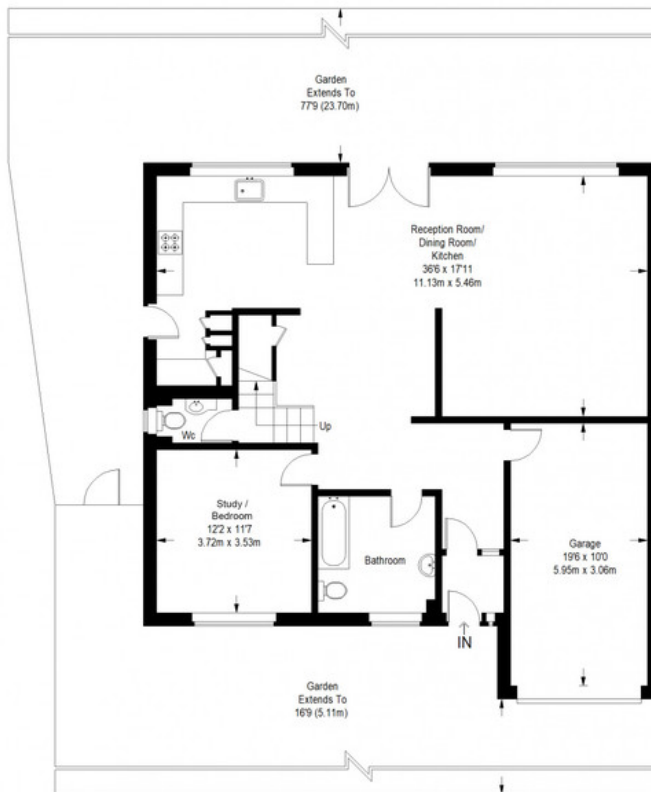
MUNDAY'S



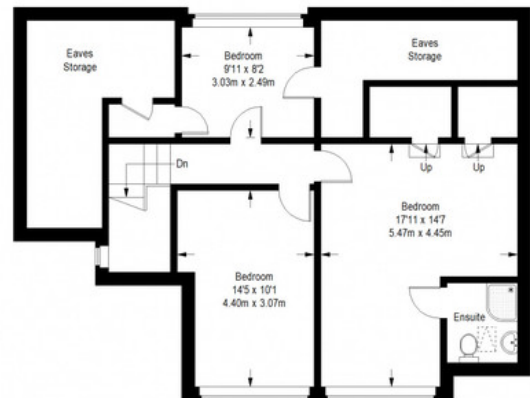
Munday's Estate Agents Ltd.
2 Mary Boast Walk
London SE5 8SP
020 3318 8900

www.mundays.com

The Woodlands



Ground Floor = 1247 sq ft



First Floor = 631 sq ft

Approximate Gross Internal Area
GROUND FLOOR = 1247 sq ft / 115.85 sq m
FIRST FLOOR = 631 sq ft / 58.62 sq m
Total = 1878 sq ft / 174.47 sq m



This plan is for layout guidance only. Not drawn to scale unless stated. Windows and door openings are approximate. Whilst every care is taken in the preparation of this plan, please check all dimensions, shapes and compass bearings before making any decisions reliant upon them. (ID357409)