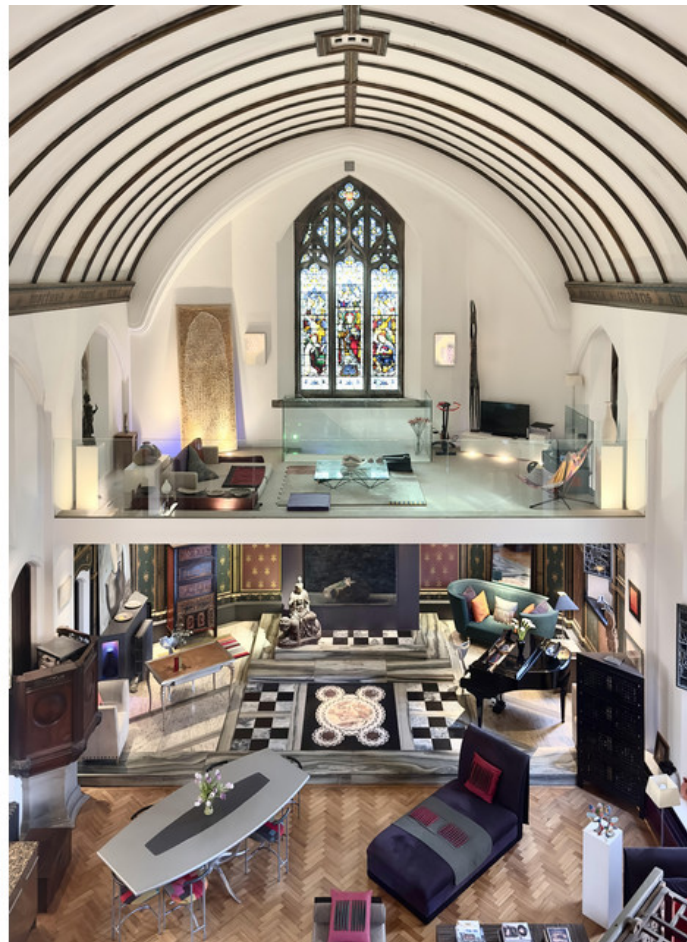


MUNDAY'S

The Chapel, St. Gabriel's Manor,  
Cormont Road, Camberwell

£2,950,000



This amazing property, as featured on Channel 4's Great British Home Restoration, has a definite 'wow' factor. It is almost impossible at first sight to prevent yourself from uttering the word 'wow' because of the sheer elegance and grandeur of the main living space. This stylish yet practical home literally takes your breath away the moment you enter the cavernous main room with its beautiful stained-glass windows, Latin friezes and impressive vaulted ceiling high above.

We are standing in a Grade II listed Victorian chapel conversion measuring over 3,000 square feet situated in a quiet road immediately opposite the glorious Myatt's Field Park within the Minet conservation area. The park is a great boon to have right on the doorstep being a wonderful place to walk, relax in the open air or take a snack at The Little Cat Cafe.

*Munday's Estate Agents Ltd.*  
2 Mary Boast Walk  
London SE5 8SP  
020 3318 8900

[www.mundays.com](http://www.mundays.com)

MUNDAY'S

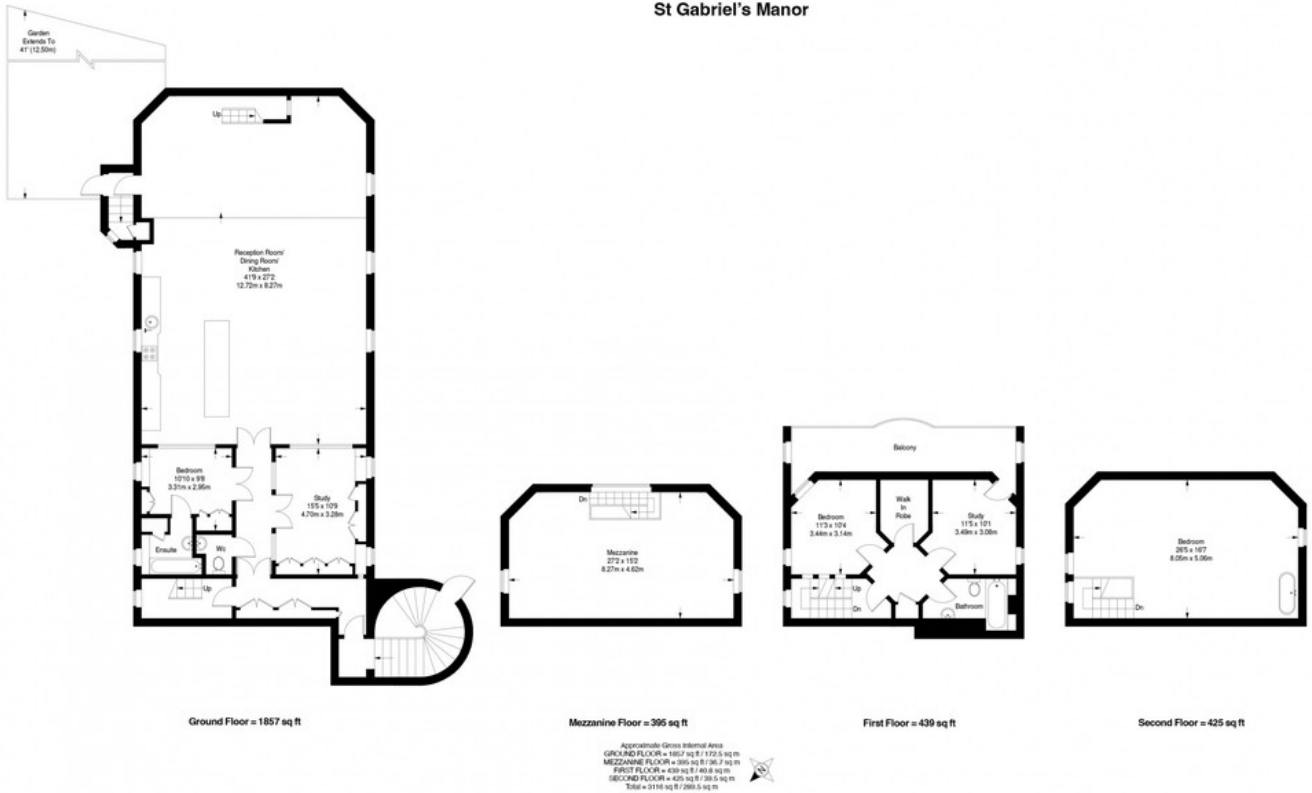


*Munday's Estate Agents Ltd.*  
2 Mary Boast Walk  
London SE5 8SP  
020 3318 8900

[www.mundays.com](http://www.mundays.com)



## St Gabriel's Manor



This plan is for layout guidance only. Not drawn to scale unless stated. Windows and door openings are approximate. Whilst every care is taken in the preparation of this plan, please check all dimensions, shapes and compass bearings before making any decisions reliant upon them. (C067408)