

## Sturdy Road, Nunhead

£450,000



Offers in excess of £450,000.

Park-facing, spacious and chain free one bedroom ground floor conversion apartment with a great layout, its own front door, and a cute private courtyard garden.

Find your new entertaining-friendly pad within a handsome converted former Victorian pub building. It is an established, architecturally-respectful development which is also home to one of the best neighbourhood restaurants in SE15: Peckham Bazaar.

Sturdy Road is a sweet street of mainly Victorian flat-fronted cottages, which has recently and pleasingly been made a no-through-road, connecting what was once two parks.

MUNDAY'S



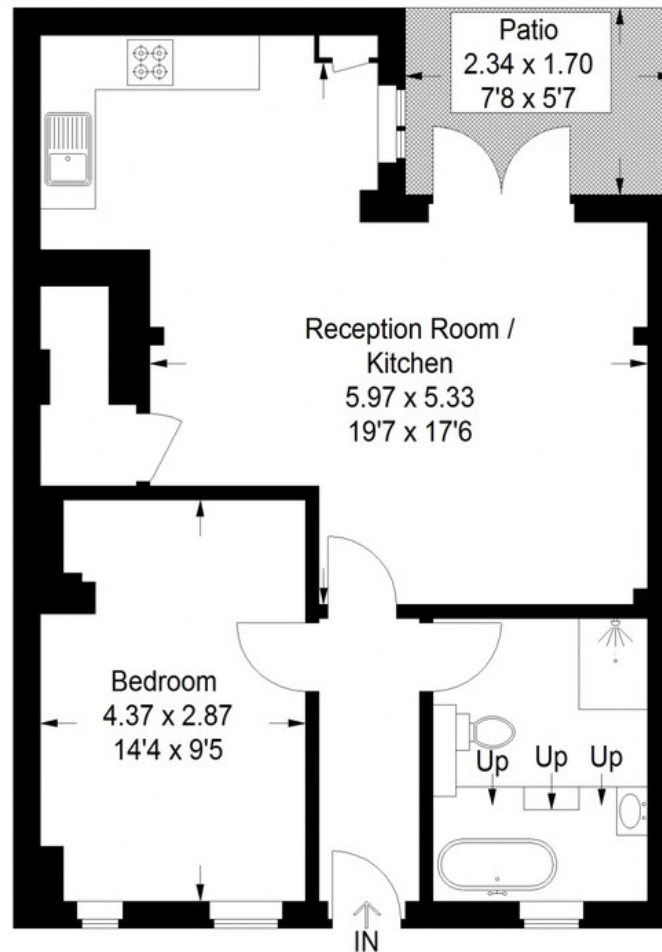
*Munday's Estate Agents Ltd.*  
2 Mary Boast Walk  
London SE5 8SP  
020 3318 8900

[www.mundays.com](http://www.mundays.com)

MUNDAY'S

## Sturdy Road, SE15

Approximate Gross Internal Area  
57.6 sq m / 620 sq ft



### Ground Floor

This plan is for layout guidance only. Not drawn to scale unless stated. Windows and door openings are approximate. Whilst every care is taken in the preparation of this plan, please check all dimensions, shapes and compass bearings before making any decisions reliant upon them. (ID1292333)

Munday's Estate Agents Ltd.  
2 Mary Boast Walk  
London SE5 8SP  
020 3318 8900

[www.mundays.com](http://www.mundays.com)