

St Swithun's Road, Hither Green

£475,000



Lovely two double bedroom first floor conversion flat of 600 square feet, on a tree-lined residential street, with pretty church views from the bay window in your west-facing reception room. A substantial private garden (a sunny one - facing east with a big twist of south, access it via the side of the house) completes the offering. Chain free.

The property further boasts a Freehold-share, a pleasing neutral decorative scheme, high ceilings, double glazing, and good fitted storage.

Walk just eight minutes to Hither Green Station (Cannon Street is a 13 minute journey). You are also close to plenty of cafes and conveniences.



MUNDAY'S

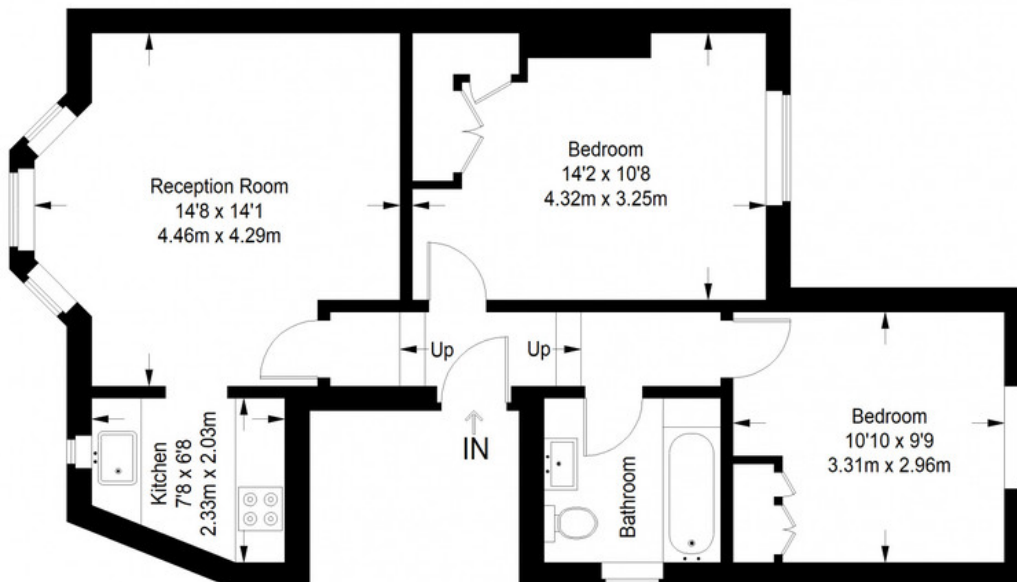


*Munday's Estate Agents Ltd.*  
2 Mary Boast Walk  
London SE5 8SP  
020 3318 8900

[www.mundays.com](http://www.mundays.com)

**MUNDAY'S**

## St Swithuns Road



**First Floor = 601 sq ft**

Approximate Gross Internal Area  
FIRST FLOOR = 601 sq ft / 55.83 sq m  
Total = 601 sq ft / 55.83 sq m



This plan is for layout guidance only. Not drawn to scale unless stated. Windows and door openings are approximate. Whilst every care is taken in the preparation of this plan, please check all dimensions, shapes and compass bearings before making any decisions reliant upon them. (ID357409)

*Munday's Estate Agents Ltd.*  
2 Mary Boast Walk  
London SE5 8SP  
020 3318 8900

[www.mundays.com](http://www.mundays.com)