

MUNDAY'S

St Mary's Road, Peckham

£2,295,000



Grade II listed, handsome, huge, and hugely characterful double-fronted five bed, four bath C19th villa – with retained period features aplenty – on a pleasing plot providing a sizeable gated driveway (which can accommodate up to six cars!), a massive integral garage (set at lower ground floor level), and a lush and mature SW-facing garden. Chain free.

The location finds you extremely well served by public transport. You are just a three minute walk from Queens Road Peckham Station (regular and Windrush line services; be at London Bridge inside 10 minutes) and 10 from Nunhead Station (Thameslink services). There are also lots of useful bus routes from Queens Road.

Munday's Estate Agents Ltd.
2 Mary Boast Walk
London SE5 8SP
020 3318 8900

www.mundays.com

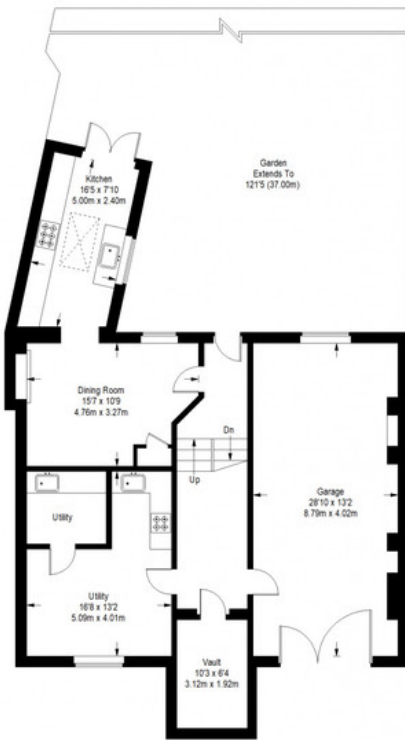
MUNDAY'S



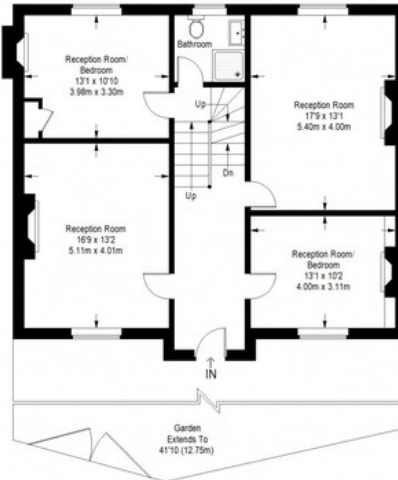
Munday's Estate Agents Ltd.
2 Mary Boast Walk
London SE5 8SP
020 3318 8900

www.mundays.com

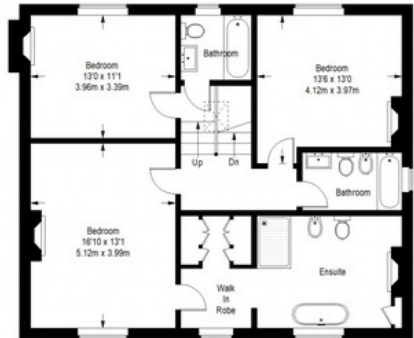
St Mary's Road



Ground Floor = 1143 sq ft



Raised Ground Floor = 972 sq ft



First Floor = 954 sq ft

Approximate Gross Internal Area
 GROUND FLOOR = 1143 sq ft / 106.18 sq m
 RAISED GROUND FLOOR = 972 sq ft / 90.30 sq m
 FIRST FLOOR = 954 sq ft / 88.63 sq m
 Total = 3069 sq ft / 285.11 sq m



This plan is for layout guidance only. Not drawn to scale unless stated. Windows and door openings are approximate. Whilst every care is taken in the preparation of this plan, please check all dimensions, shapes and compass bearings before making any decisions reliant upon them. (D357409)