

MUNDAY'S

St. Mary's Road, Peckham

£695,000



Gorgeous garden flat alert! Feast your eyes on this beautifully, thoroughly and sensitively refurbished two bedroom contemporary Georgian home with its own front door, secure gated side access (to your private sunny west-facing garden), a substantial garden studio, and off-street parking to boot.

This is a hot little spot that is so well-connected: you are just a three minute walk from Queens Road Peckham Station (regular and Overground services - be at London Bridge inside 10 minutes) and 10 from Nunhead Station (Thameslink services). There are also lots of useful bus routes from nearby Queens Road.

Munday's Estate Agents Ltd.
2 Mary Boast Walk
London SE5 8SP
020 3318 8900

www.mundays.com

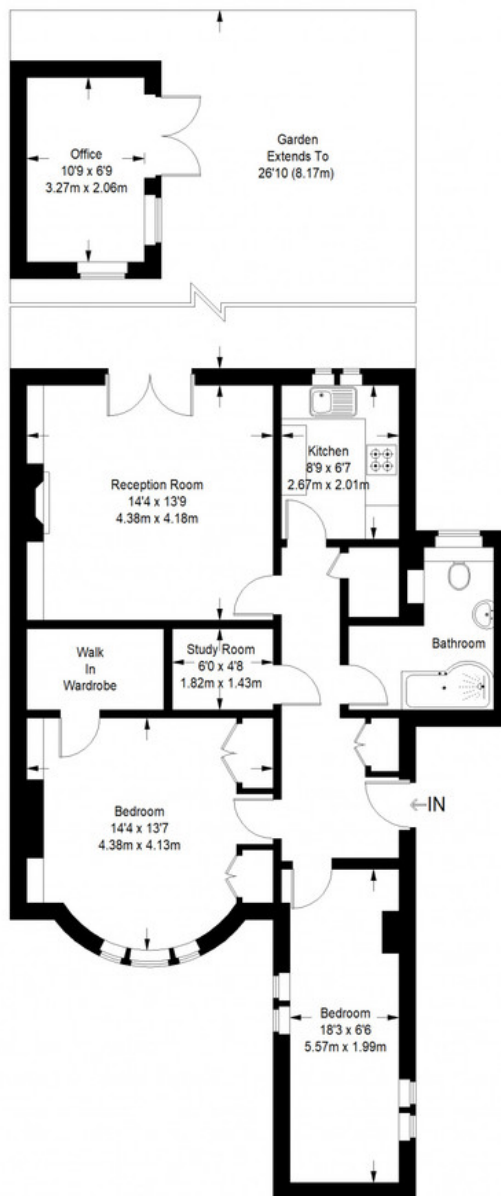
MUNDAY'S



Munday's Estate Agents Ltd.
2 Mary Boast Walk
London SE5 8SP
020 3318 8900

www.mundays.com

St Marys Road



Ground Floor = 845 sq ft

Approximate Gross Internal Area
 GROUND FLOOR = 845 sq ft / 78.50 sq m
 OFFICE = 78 sq ft / 7.25 sq m
 Total = 923 sq ft / 85.75 sq m



This plan is for layout guidance only. Not drawn to scale unless stated. Windows and door openings are approximate. Whilst every care is taken in the preparation of this plan, please check all dimensions, shapes and compass bearings before making any decisions reliant upon them. (ID357409)