

MUNDAY'S

St Mary's Road, Nunhead

£875,000



Delightful and chain free three bedroom (two doubles, one single) period maisonette of 1016 square feet, over upper floors, with its own entrance, a generous and sunny section of garden extending over 30 feet, and a studio/office (with power).

Your new home has loads of welcome features including sash and skylight windows, old school style radiators, wooden floors, and a neutral and sympathetic decorative scheme.

Find your new home on a wide and tree-lined residential Nunhead street, popping you just an eight minute walk from both Nunhead Station and Queens Road Peckham Station (Overground services as well as regular ones from here).

You are also close to Nunhead Green Conservation Area, which takes in Nunhead's well-stocked independent high street and village-style green.

Munday's Estate Agents Ltd.
2 Mary Boast Walk
London SE5 8SP
020 3318 8900

www.mundays.com

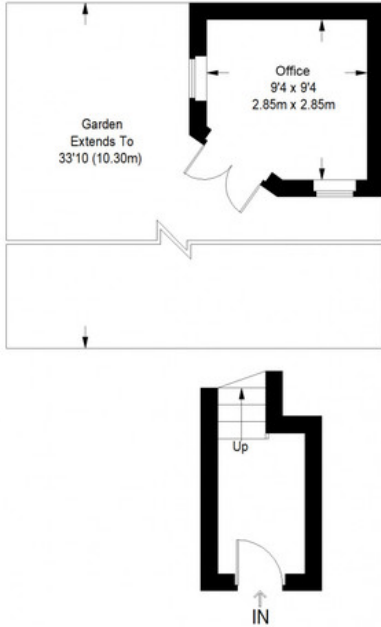
MUNDAY'S



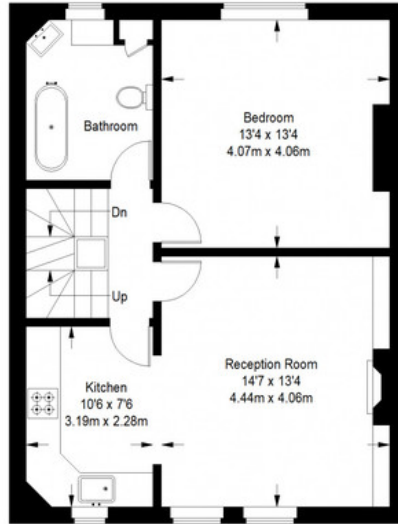
Munday's Estate Agents Ltd.
2 Mary Boast Walk
London SE5 8SP
020 3318 8900

www.mundays.com

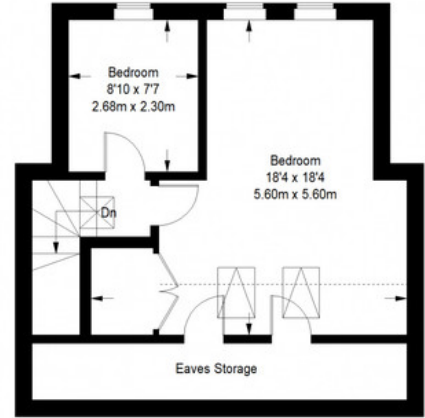
St Mary's Road




Ground Floor = 52 sq ft



First Floor = 601 sq ft



Second Floor = 363 sq ft

 = Reduced headroom below 1.5 m / 5'0

Approximate Gross Internal Area
 GROUND FLOOR = 52 sq ft / 4.83 sq m
 FIRST FLOOR = 601 sq ft / 55.83 sq m
 SECOND FLOOR (EXCLUDING EAVES STORAGE) = 363 sq ft / 33.72 sq m
 Total = 1016 sq ft / 94.39 sq m



This plan is for layout guidance only. Not drawn to scale unless stated. Windows and door openings are approximate. Whilst every care is taken in the preparation of this plan, please check all dimensions, shapes and compass bearings before making any decisions reliant upon them. (ID357409)