

St Mary's Road, Nunhead

£499,950



Cool ex-LA purpose-built two double bedroom second floor flat of 673 square feet, with a cute private west-facing balcony accessed from the living/dining room.

The block is an attractive low-rise one, with a large communal garden set to the rear. You also have use of a pram shed externally plus a large lockable cupboard by your front door (great storage!), and bicycle storage lockers are available to rent from Southwark. Parking is unrestricted on the street.

Find your new pad on a wide and tree-lined residential Nunhead street, which places you just eight minutes by foot from Queens Road Peckham Station, and nine from Nunhead Station (both are Zone 2). You are also close to Nunhead Green Conservation Area, which takes in Nunhead's well-stocked independent high street and village-style green.

MUNDAY'S

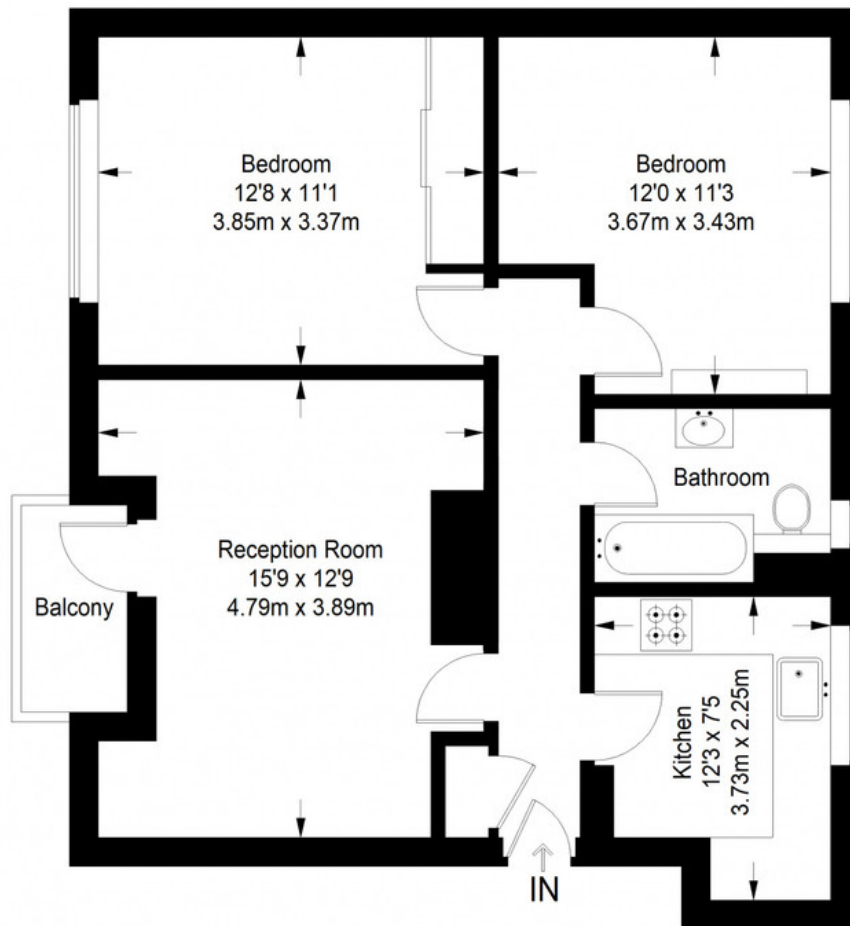


Munday's Estate Agents Ltd.
2 Mary Boast Walk
London SE5 8SP
020 3318 8900

www.mundays.com

MUNDAY'S

St Mary's Road



First Floor = 673 sq ft

Approximate Gross Internal Area
FIRST FLOOR = 673 sq ft / 62.55 sq m
Total = 673 sq ft / 62.55 sq m



This plan is for layout guidance only. Not drawn to scale unless stated. Windows and door openings are approximate. Whilst every care is taken in the preparation of this plan, please check all dimensions, shapes and compass bearings before making any decisions reliant upon them. (ID357409)

Munday's Estate Agents Ltd.
2 Mary Boast Walk
London SE5 8SP
020 3318 8900

www.mundays.com