

MUNDAY'S

St Mary's Road, Nunhead

£595,000



Charming two bedroom Victorian conversion flat with its own front door and a delightful private part-walled east-facing garden - with direct access from the kitchen.

The apartment has a respectable footprint of 717 square feet, and is delivered over the entire lower ground floor of a sizeable Victorian semi.

You'll find it on a wide and tree-lined residential Nunhead street, which places you just seven minutes by foot from both Nunhead and Queens Road Peckham stations (both are Fare Zone 2).

You're also close to Nunhead Green Conservation Area; which takes in Nunhead's well-stocked independent high street and village-style green.

Munday's Estate Agents Ltd.
2 Mary Boast Walk
London SE5 8SP
020 3318 8900

www.mundays.com

MUNDAY'S

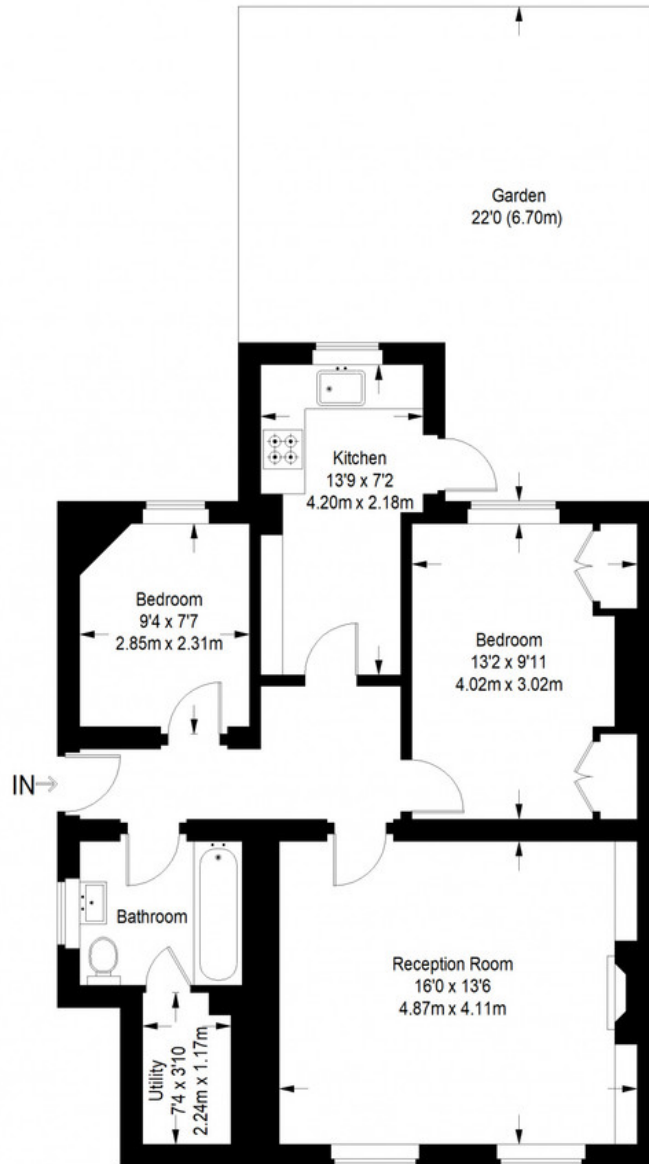


Munday's Estate Agents Ltd.
2 Mary Boast Walk
London SE5 8SP
020 3318 8900

www.mundays.com

MUNDAY'S

St Mary's Road



Ground Floor = 717 sq ft

Approximate Gross Internal Area
GROUND FLOOR = 717 sq ft / 67 sq m
Total = 717 sq ft / 67 sq m



This plan is for layout guidance only. Not drawn to scale unless stated. Windows and door openings are approximate. Whilst every care is taken in the preparation of this plan, please check all dimensions, shapes and compass bearings before making any decisions reliant upon them. (ID357409)

Munday's Estate Agents Ltd.
2 Mary Boast Walk
London SE5 8SP
020 3318 8900

www.mundays.com