

MUNDAY'S

St Asaph Road, Brockley

£750,000



Beautiful upper flat of 976 square feet, with a Freehold-share, two double bedrooms, a bathroom and shower room, and a private south-facing roof terrace.

Find your new home within a traditional Victorian bay-fronted terrace, on a popular residential street between the stations and town centres of Nunhead (a seven minute walk) and Brockley (nine).

Munday's Estate Agents Ltd.
2 Mary Boast Walk
London SE5 8SP
020 3318 8900

www.mundays.com

MUNDAY'S

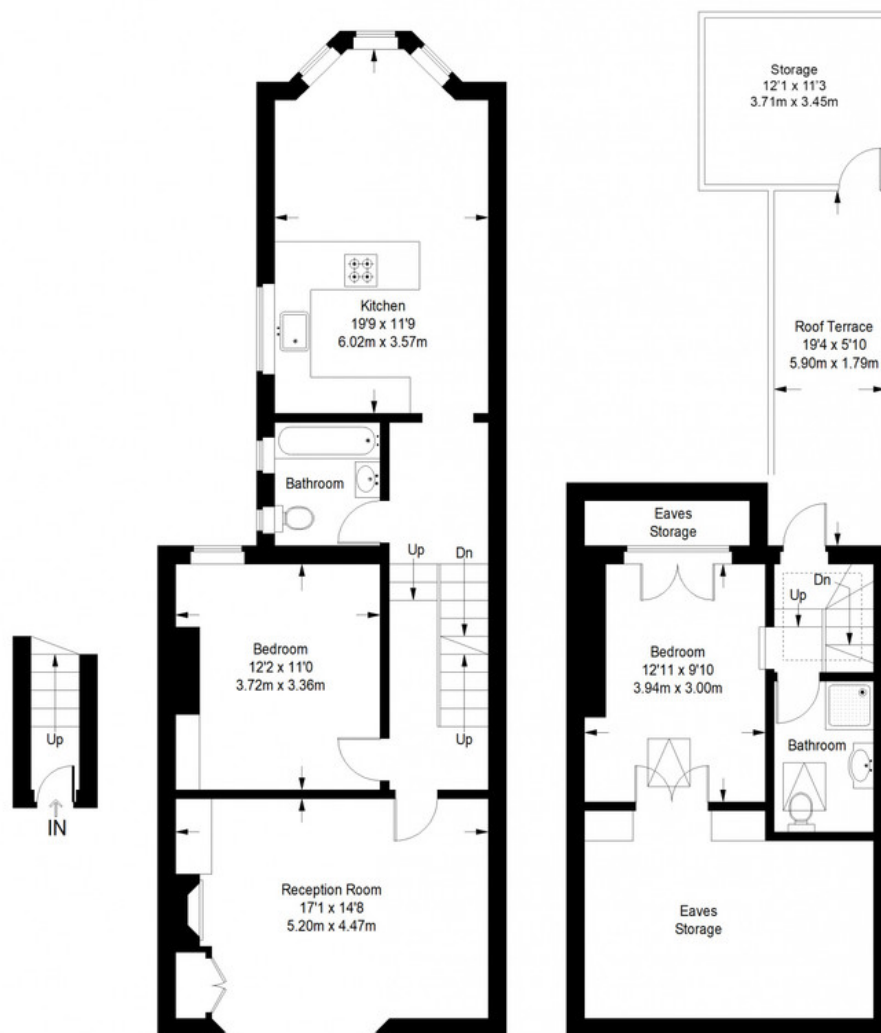


Munday's Estate Agents Ltd.
2 Mary Boast Walk
London SE5 8SP
020 3318 8900

www.mundays.com

MUNDAY'S

St. Asaph Road



Ground Floor = 22 sq ft

First Floor = 749 sq ft

Second Floor = 205 sq ft

Approximate Gross Internal Area
 GROUND FLOOR = 22 sq ft / 2.04 sq m
 FIRST FLOOR = 749 sq ft / 69.58 sq m
 SECOND FLOOR (Excluding Eaves Storage) = 205 sq ft / 19.04 sq m
 (Eaves Storage) = 169 sq ft / 15.70 sq m
 Total = 976 sq ft / 90.67 sq m



This plan is for layout guidance only. Not drawn to scale unless stated. Windows and door openings are approximate. Whilst every care is taken in the preparation of this plan, please check all dimensions, shapes and compass bearings before making any decisions reliant upon them. (ID357409)

Munday's Estate Agents Ltd.
 2 Mary Boast Walk
 London SE5 8SP
 020 3318 8900

www.mundays.com