

Springrice Road, Hither Green

£395,000

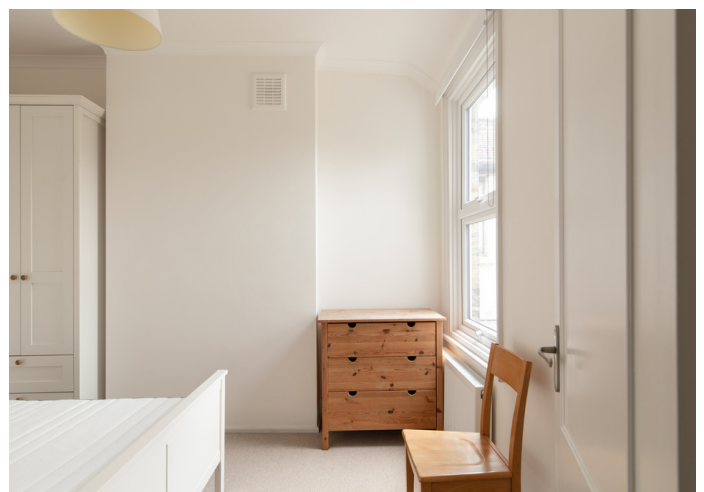
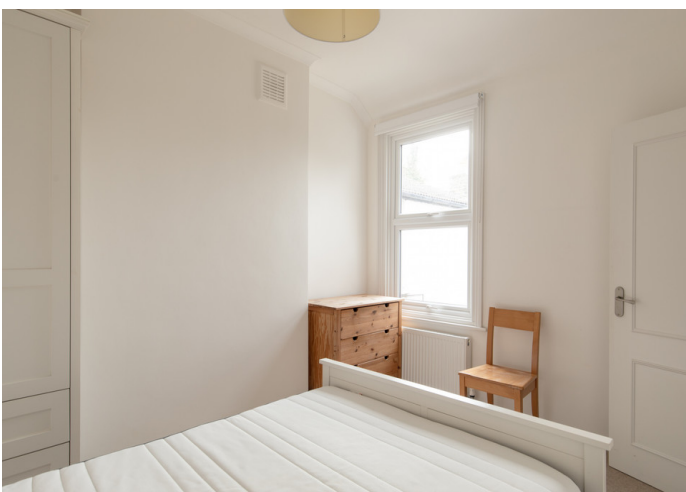


Generous and chain free one bedroom first floor Victorian conversion flat of 623 square feet. It is in top nick, with a neutral decorative scheme, modern kitchen and bathroom, and a Freehold-share.

Walk just six minutes to Hither Green Station (Cannon Street is a 13 minute journey), and you are also close to plenty of cafes and conveniences.

The apartment takes the first floor of a smart Victorian bay-fronted terrace. The loft space is also demised - which is handy should you wish to extend up in the future.

MUNDAY'S

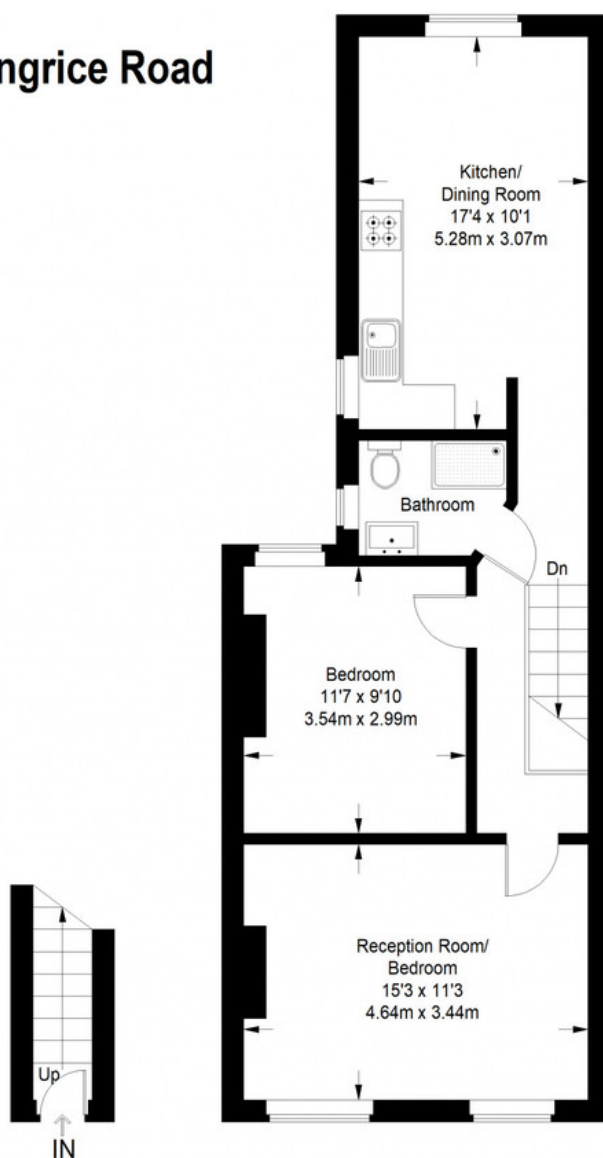


Munday's Estate Agents Ltd.
2 Mary Boast Walk
London SE5 8SP
020 3318 8900

www.mundays.com

MUNDAY'S

Springrice Road



Ground Floor
Entrance = 24 sq ft

First Floor = 599 sq ft

Approximate Gross Internal Area
GROUND FLOOR ENTRANCE = 24 sq ft / 2.23 sq m
FIRST FLOOR = 599 sq ft / 55.65 sq m
Total = 623 sq ft / 57.88 sq m



This plan is for layout guidance only. Not drawn to scale unless stated. Windows and door openings are approximate. Whilst every care is taken in the preparation of this plan, please check all dimensions, shapes and compass bearings before making any decisions reliant upon them. (ID357409)

Munday's Estate Agents Ltd.
2 Mary Boast Walk
London SE5 8SP
020 3318 8900

www.mundays.com