

Southwell Road, Camberwell

£580,000



Bright two bedroom second floor Victorian conversion apartment, with a Freehold-share, in end of terrace position on a cool Camberwell back street of period homes.

The flat measures in at 701 square feet, with its front door at first floor level. There is also a large loft which could be developed should you wish for more space/a future project.

Find your new home set between the town centres of Camberwell and Brixton, near two Fare Zone 2 stations (Loughborough Junction is six minutes by foot and Denmark Hill Station is 14) and great bus routes on nearby Coldharbour Lane.

MUNDAY'S

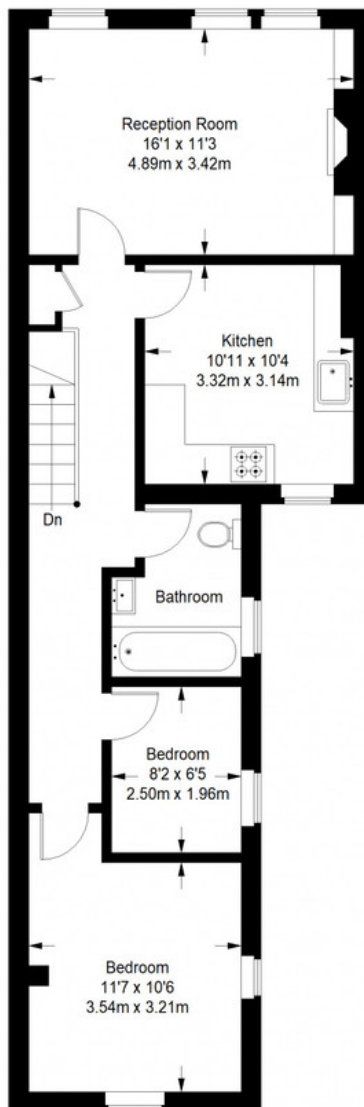
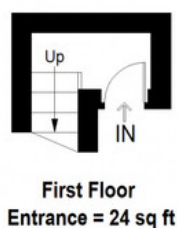


*Munday's Estate Agents Ltd.*  
2 Mary Boast Walk  
London SE5 8SP  
020 3318 8900

[www.mundays.com](http://www.mundays.com)

**MUNDAY'S**

## Southwell Road



**Second Floor = 677 sq ft**

Approximate Gross Internal Area  
FIRST FLOOR ENTRANCE = 24 sq ft / 2.23 sq m  
SECOND FLOOR = 677 sq ft / 62.89 sq m  
Total = 701 sq ft / 65.12 sq m



This plan is for layout guidance only. Not drawn to scale unless stated. Windows and door openings are approximate. Whilst every care is taken in the preparation of this plan, please check all dimensions, shapes and compass bearings before making any decisions reliant upon them. (ID357409)

*Munday's Estate Agents Ltd.*  
2 Mary Boast Walk  
London SE5 8SP  
020 3318 8900

[www.mundays.com](http://www.mundays.com)