

MUNDAY'S

Southend Lane, Lower Sydenham

£285,000



This strikes us as fab value for money! A long-leased two bedroom purpose-built double-glazed apartment, over two floors and of 810 square feet, with a delightful green and leafy outlook to the back; looking south-west onto Southend Park. Chain free.

Walk just seven minutes to Lower Sydenham Station - either through or around the park. Residents and visitors can park directly in front of the block in bays, and there is plenty of unrestricted on-street parking.

Munday's Estate Agents Ltd.
2 Mary Boast Walk
London SE5 8SP
020 3318 8900

www.mundays.com

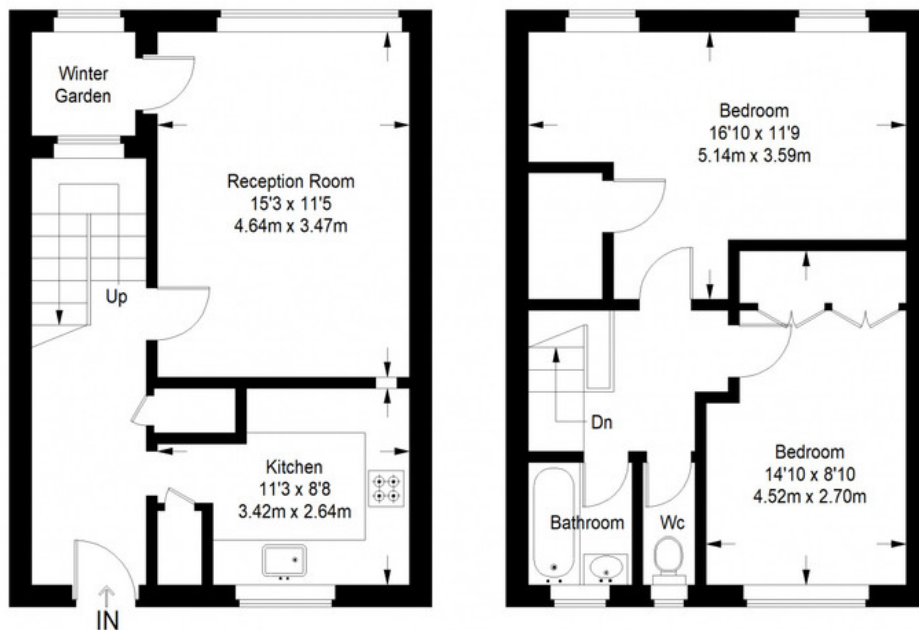
MUNDAY'S



Munday's Estate Agents Ltd.
2 Mary Boast Walk
London SE5 8SP
020 3318 8900

www.mundays.com

Berkshire House



Second Floor = 381 sq ft

Third Floor = 408 sq ft

Approximate Gross Internal Area
SECOND FLOOR = 381 sq ft / 35.39 sq m
THIRD FLOOR = 408 sq ft / 37.90 sq m
WINTER GARDEN = 21 sq ft / 1.95 sq m
Total = 810 sq ft / 75.25 sq m



This plan is for layout guidance only. Not drawn to scale unless stated. Windows and door openings are approximate. Whilst every care is taken in the preparation of this plan, please check all dimensions, shapes and compass bearings before making any decisions reliant upon them. (ID357409)