

MUNDAY'S

Southampton Way, Camberwell

£875,000



Grade II listed two double bedroom Georgian cottage (circa 1830), with a south-facing garden plus garden studio. Chain free.

The charming home has been the subject of a comprehensive, sensitive and beautiful renovation under its current ownership. You need not lift a finger.

The location is a strong one: between Peckham and Camberwell centres, and really close to Burgess Park (walk five minutes).

Munday's Estate Agents Ltd.
2 Mary Boast Walk
London SE5 8SP
020 3318 8900

www.mundays.com

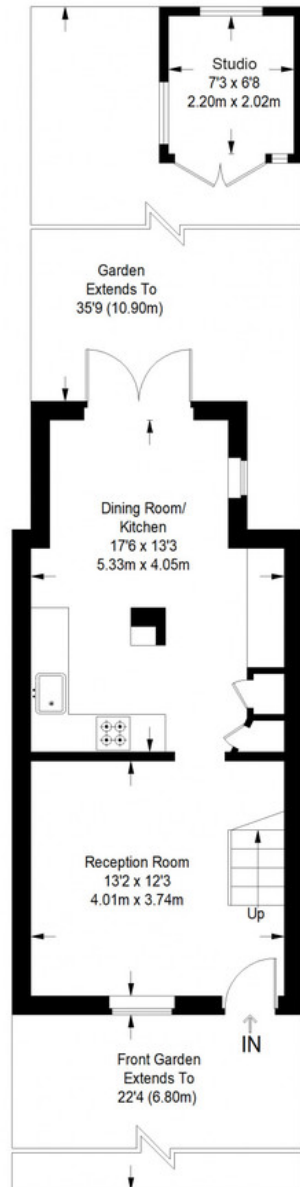
MUNDAY'S



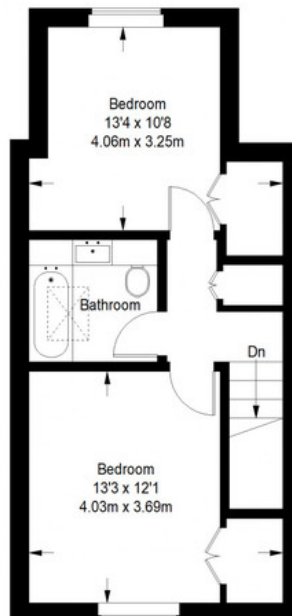
Munday's Estate Agents Ltd.
2 Mary Boast Walk
London SE5 8SP
020 3318 8900

www.mundays.com

Southampton Way



Ground Floor = 380 sq ft



First Floor = 371 sq ft

Approximate Gross Internal Area
 GROUND FLOOR = 380 sq ft / 35 sq m
 FIRST FLOOR = 371 sq ft / 35 sq m
 STUDIO = 48 sq ft / 4 sq m
 Total (excluding studio) = 751 sq ft / 70 sq m



This plan is for layout guidance only. Not drawn to scale unless stated. Windows and door openings are approximate. Whilst every care is taken in the preparation of this plan, please check all dimensions, shapes and compass bearings before making any decisions reliant upon them. (ID357409)