

MUNDAY'S

Selby Road, Anerley

£350,000



Bright, neat and chain free two double bedroom first floor purpose-built maisonette of circa 600 square feet, with its own front door and a low-maintenance private garden.

Betts Park is really close, and you can stroll to Anerley Station and local shops and services in just eight minutes.

The property is set within a semi-detached building (only one other home is below yours); you benefit from windows to your three external walls. An attractive stairway with smart white railings gets you to your front door. In here and first on your right is your windowed bathroom with white suite and blue wall tiles.

Munday's Estate Agents Ltd.
2 Mary Boast Walk
London SE5 8SP
020 3318 8900

www.mundays.com

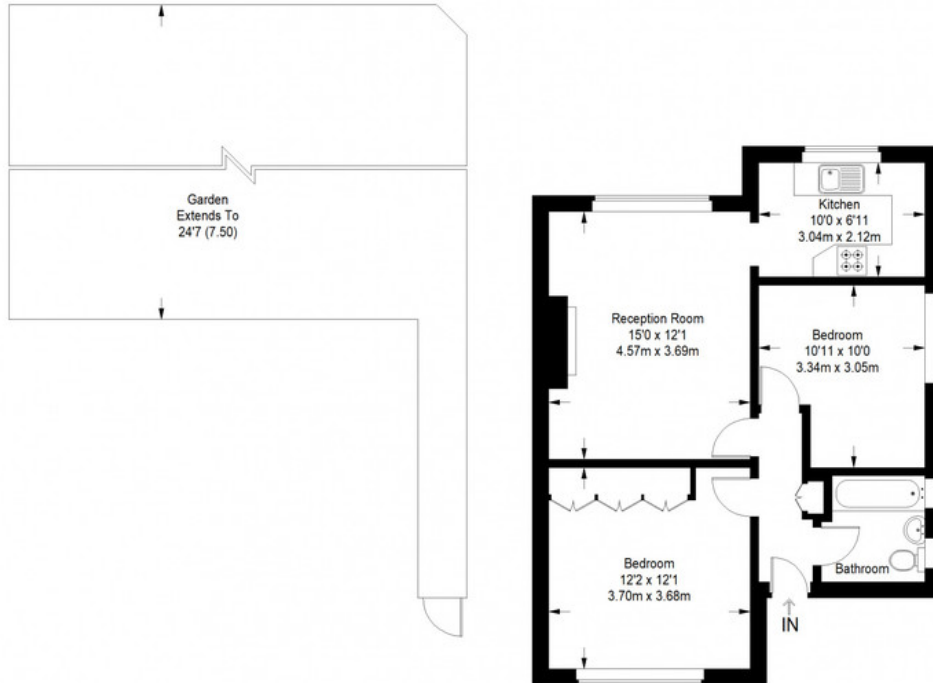
MUNDAY'S



Munday's Estate Agents Ltd.
2 Mary Boast Walk
London SE5 8SP
020 3318 8900

www.mundays.com

Selby Road



First Floor = 598 sq ft

Approximate Gross Internal Area
FIRST FLOOR = 598 sq ft / 55.55 sq m
Total = 598 sq ft / 55.55 sq m

This plan is for layout guidance only. Not drawn to scale unless stated. Windows and door openings are approximate. Whilst every care is taken in the preparation of this plan, please check all dimensions, shapes and compass bearings before making any decisions reliant upon them. (ID357409)