

MUNDAY'S

Rye Road, Nunhead

£699,950



Chain free three bed, two bath, ground floor maisonette with a Freehold-share, your own front door, and a low-maintenance garden which has both direct and street access. A fresh and neutral decorative scheme seals the deal.

Your new fab home takes the ground floor of an end of terrace Victorian house, in a corner position with Hichisson Road. This is a notably quiet network of streets (driving lesson territory!).

You are really close to Peckham Rye Park and Common's 113 acres, the beautiful green space of Nunhead cemetery, and also to volunteer-run Aquarius Golf Club. Your local stations are Nunhead, Peckham Rye, Crofton Park and Brockley; all are circa a mile from the house.

Munday's Estate Agents Ltd.
2 Mary Boast Walk
London SE5 8SP
020 3318 8900

www.mundays.com

MUNDAY'S

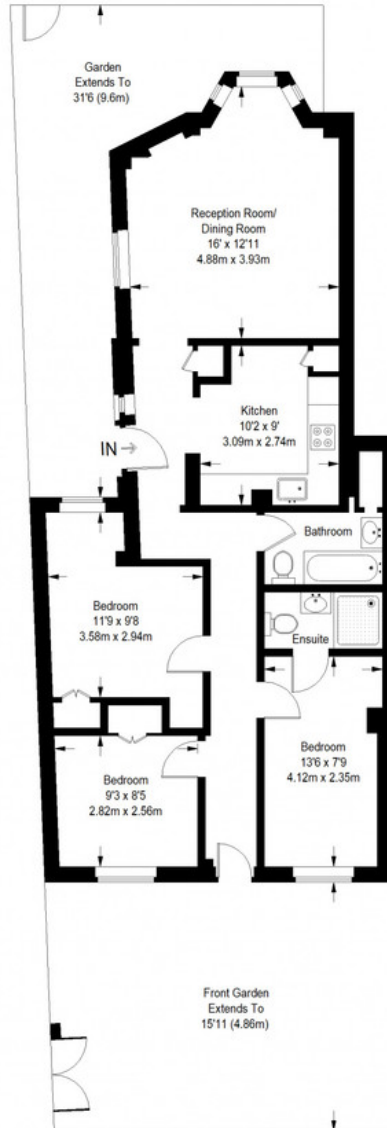


Munday's Estate Agents Ltd.
2 Mary Boast Walk
London SE5 8SP
020 3318 8900

www.mundays.com

MUNDAY'S

Rye Road



Ground Floor = 822 sq ft

Approximate Gross Internal Area
GROUND FLOOR = 822 sq ft / 76.36 sq m
Total = 822 sq ft / 76.36 sq m



This plan is for layout guidance only. Not drawn to scale unless stated. Windows and door openings are approximate. Whilst every care is taken in the preparation of this plan, please check all dimensions, shapes and compass bearings before making any decisions reliant upon them. (ID357409)

Munday's Estate Agents Ltd.
2 Mary Boast Walk
London SE5 8SP
020 3318 8900

www.mundays.com