

MUNDAY'S

Rosendale Road, West Dulwich

£380,000



Large leasehold lower ground floor conversion flat of 615 square feet, with one double bedroom plus a small single/home office, and a generous and mature east-facing communal garden.

The property - which was renovated recently to a high standard - is in a top location: a leafy, residential, wonderful West Dulwich one, with West Dulwich Station just a short walk away (under 10 minutes).

Parking is unrestricted, on-street.

Munday's Estate Agents Ltd.
2 Mary Boast Walk
London SE5 8SP
020 3318 8900

www.mundays.com

MUNDAY'S

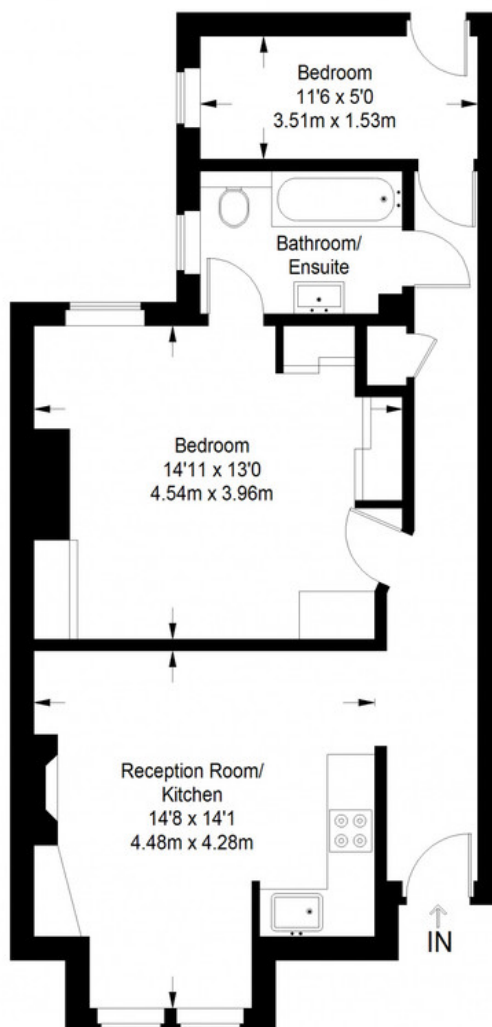


Munday's Estate Agents Ltd.
2 Mary Boast Walk
London SE5 8SP
020 3318 8900

www.mundays.com

MUNDAY'S

Rosendale Road



Lower Ground Floor = 615 sq ft

Approximate Gross Internal Area
LOWER GROUND FLOOR = 615 sq ft / 57.13 sq m
Total = 615 sq ft / 57.13 sq m



This plan is for layout guidance only. Not drawn to scale unless stated. Windows and door openings are approximate. Whilst every care is taken in the preparation of this plan, please check all dimensions, shapes and compass bearings before making any decisions reliant upon them. (ID357409)

Munday's Estate Agents Ltd.
2 Mary Boast Walk
London SE5 8SP
020 3318 8900

www.mundays.com