

MUNDAY'S

Rosendale Road, Herne Hill

£325,000



Architect owned and designed one double bedroom ground floor purpose-built flat. The perfect pad is set in an attractive and interesting historic cluster of period buildings, really close to Brockwell Park and central Herne Hill. Walk just nine minutes to Herne Hill Station. Chain free.

*Munday's Estate Agents Ltd.*  
2 Mary Boast Walk  
London SE5 8SP  
020 3318 8900

[www.mundays.com](http://www.mundays.com)

MUNDAY'S

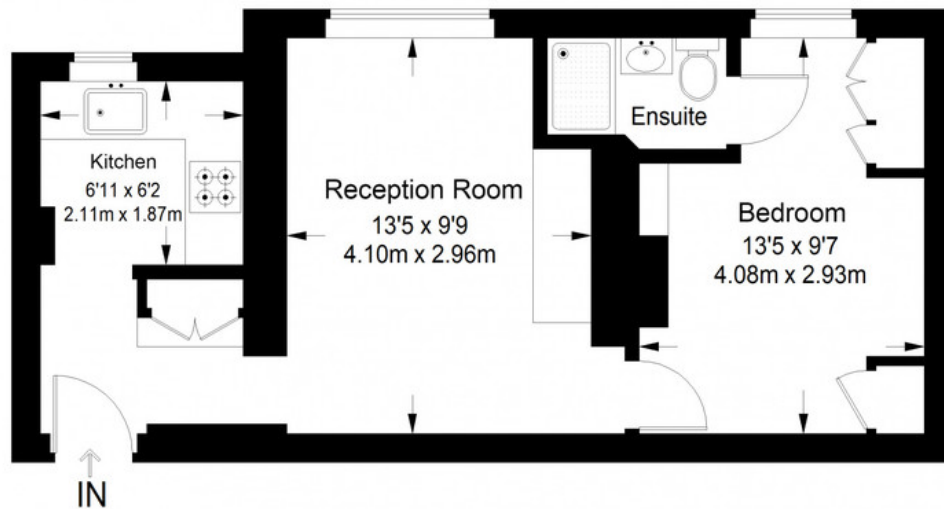


*Munday's Estate Agents Ltd.*  
2 Mary Boast Walk  
London SE5 8SP  
020 3318 8900

[www.mundays.com](http://www.mundays.com)

**MUNDAY'S**

## Peabody



**Ground Floor = 393 sq ft**



Approximate Gross Internal Area  
GROUND FLOOR = 393 sq ft / 36.51 sq m  
Total = 393 sq ft / 36.51 sq m

This plan is for layout guidance only. Not drawn to scale unless stated. Windows and door openings are approximate. Whilst every care is taken in the preparation of this plan, please check all dimensions, shapes and compass bearings before making any decisions reliant upon them. (ID357409)