

MUNDAY'S

Ringmore Rise, Forest Hill

£2,650,000



Quite simply, the best house we've ever seen! Architect-designed and built entirely around the plot's incredible London skyline views - in a leafy and friendly community near Horniman Museum and Gardens - this huge detached house (appropriately named 'Sail House') presents no compromises.

You'll enjoy two entrances (you have the possibility to create a self-contained section within the property), side access, a generous driveway, an integral garage, front and rear gardens, and a house-spanning rear terrace too - which takes full advantage of the sensational vistas (which have to be seen with your own lenses to be fully appreciated!).

The location is a top spot in all senses - you are within easy walking distance of Forest Hill Station (12 minutes) and Honor Oak Park Station (16), and both towns' respective centres. Local schools are excellent too, and include Fairlawn and Horniman primaries. The Dulwich independent schools are a short drive.

Munday's Estate Agents Ltd.
2 Mary Boast Walk
London SE5 8SP
020 3318 8900

www.mundays.com

MUNDAY'S



Munday's Estate Agents Ltd.
2 Mary Boast Walk
London SE5 8SP
020 3318 8900

www.mundays.com

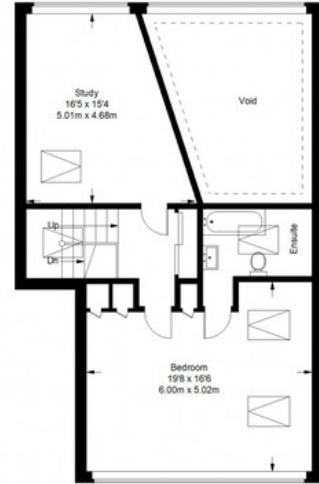
Ringmore Rise



Lower Ground Floor = 1175 sq ft



Ground Floor = 1042 sq ft



First Floor = 684 sq ft

Approximate Gross Internal Area
 LOWER GROUND FLOOR = 1175 sq ft / 109.16 sq m
 GROUND FLOOR = 1042 sq ft / 96.80 sq m
 FIRST FLOOR (EXCLUDING VOID) = 684 sq ft / 64.47 sq m
 Total = 2911 sq ft / 270.43 sq m



This plan is for layout guidance only. Not drawn to scale unless stated. Windows and door openings are approximate. Whilst every care is taken in the preparation of this plan, please check all dimensions, shapes and compass bearings before making any decisions reliant upon them. (D357409)