

MUNDAY'S

Relf Road, Peckham Rye

£1,295,000



Big, beautifully-presented and extended four double bed, two bath Victorian terraced house with east-facing and part-walled 'city' garden, with street access (your garden gate gives access to a no through road behind), on a pretty residential street that is just a five minute walk from both Bellenden Road and Peckham Rye Station. Permit parking is on-street, for residents.

Welcome features include stripped floors, period fireplaces, sensible built-in storage, neutral decor, and a big double-aspect kitchen/diner with folding doors, stretching over 20 feet.

*Munday's Estate Agents Ltd.*  
2 Mary Boast Walk  
London SE5 8SP  
020 3318 8900

[www.mundays.com](http://www.mundays.com)



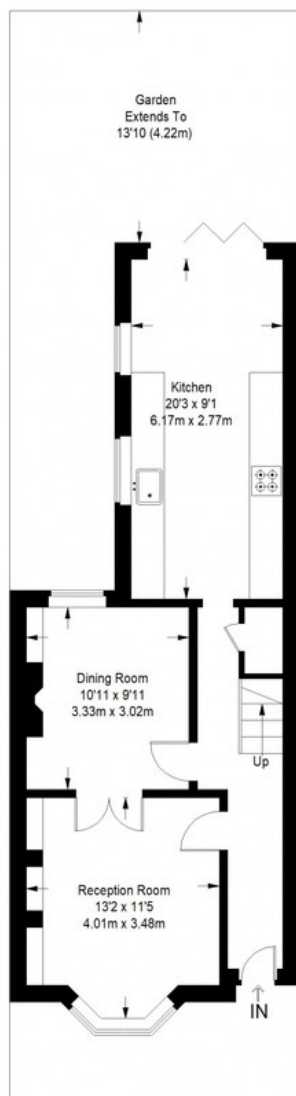
MUNDAY'S



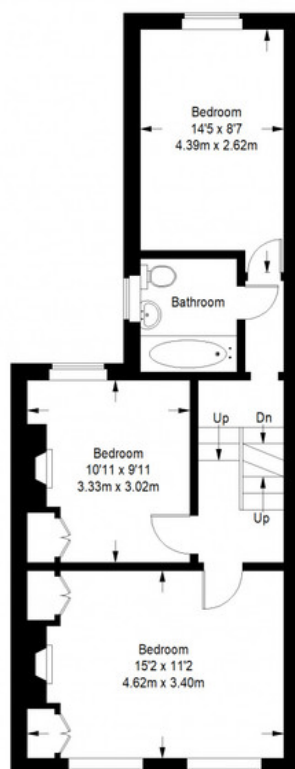
*Munday's Estate Agents Ltd.*  
2 Mary Boast Walk  
London SE5 8SP  
020 3318 8900

[www.mundays.com](http://www.mundays.com)

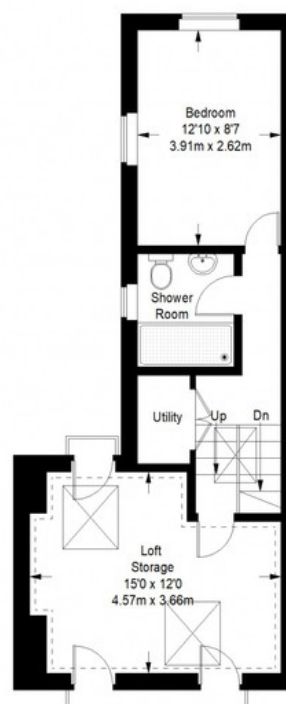
## Relf Road



Ground Floor = 538 sq ft



First Floor = 522 sq ft



Second Floor = 400 sq ft

= Reduced headroom below 1.5 m / 5'0

Approximate Gross Internal Area  
 GROUND FLOOR = 538 sq ft / 49.98 sq m  
 FIRST FLOOR = 522 sq ft / 48.49 sq m  
 SECOND FLOOR (Excluding Reduced Headroom) = 234 sq ft / 21.74 sq m  
 (Reduced Headroom) = 166 sq ft / 15.42 sq m  
 Total = 1460 sq ft / 135.63 sq m



This plan is for layout guidance only. Not drawn to scale unless stated. Windows and door openings are approximate. Whilst every care is taken in the preparation of this plan, please check all dimensions, shapes and compass bearings before making any decisions reliant upon them. (ID357409)