

Purser House, Tulse Hill

£350,000



Bright two double bedroom ex-LA flat with a private east-facing balcony and long lease, on the third floor of a purpose-built block on Tulse Hill. Find your new pad winning-at-life close to Brockwell Park and its fab lido.

Bus links are excellent and plentiful in this locale, or stroll to one of three local mainline stations: Tulse Hill, Herne Hill and Brixton (Brixton tube is easily walkable too).

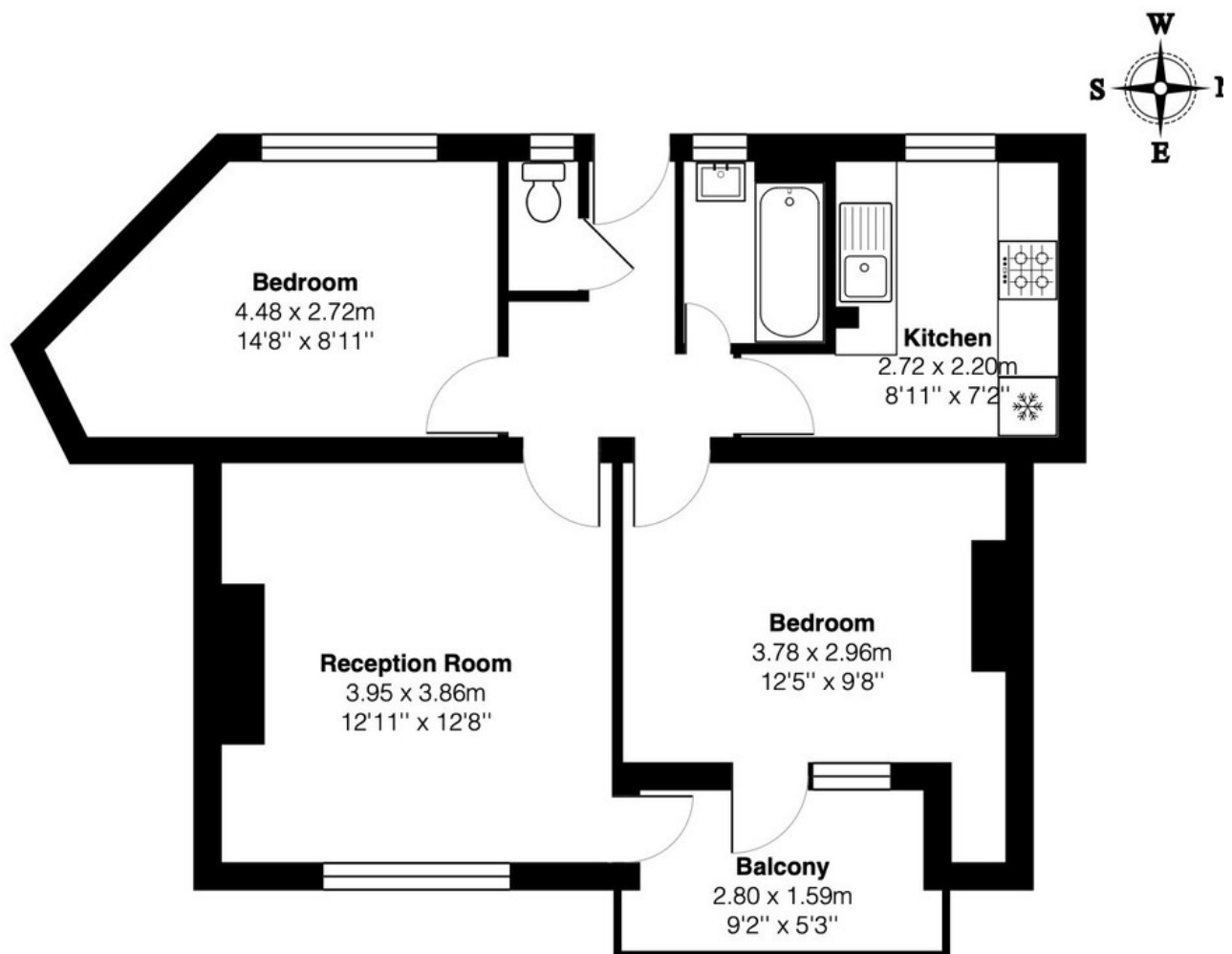
MUNDAY'S



Munday's Estate Agents Ltd.
2 Mary Boast Walk
London SE5 8SP
020 3318 8900

www.mundays.com

MUNDAY'S



Third Floor

Total Area: 54.8 m² ... 590 ft² (excluding balcony)

All measurements are approximate and for display purposes only

Munday's Estate Agents Ltd.
2 Mary Boast Walk
London SE5 8SP
020 3318 8900

www.mundays.com