

MUNDAY'S

Choumert Grove, Peckham Rye

£1,300,000



Fantastic four bed Victorian terrace that's been architecturally enhanced and deftly extended upwards and outwards. Delivered over three floors - and 1738 square feet - the house has both bath and shower rooms, a guest w.c. and generous and flexible reception space, in addition to its four double bedrooms. A decked and lawned east-facing garden with leafy and churchy vistas delights at the rear. Within the house we're swooning over classy interior decisions such as solid oak herringbone floors, poured concrete kitchen counters, walnut and steel stairs, designer papers and trendy tiling. Walk just 3 minutes for Peckham Rye Station. Permit-parking on the street is available for residents. Freehold.

Munday's Estate Agents Ltd.
2 Mary Boast Walk
London SE5 8SP
020 3318 8900

www.mundays.com

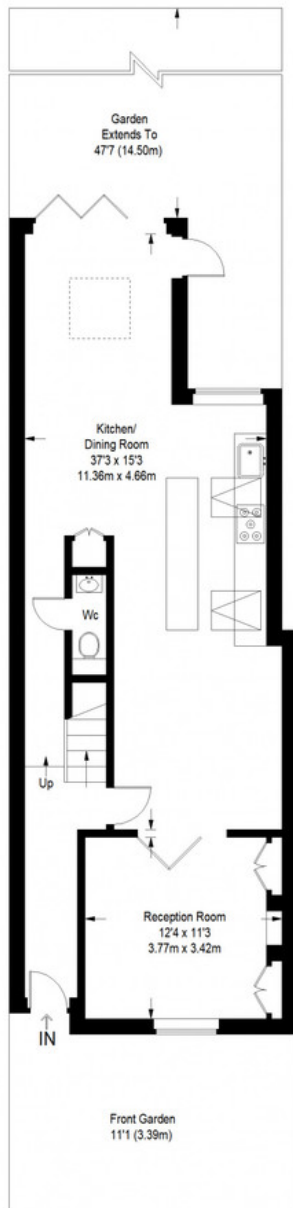
MUNDAY'S



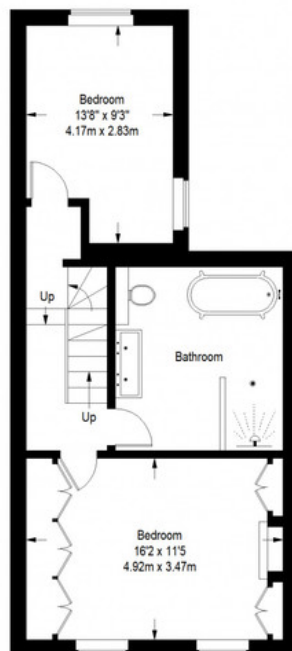
Munday's Estate Agents Ltd.
2 Mary Boast Walk
London SE5 8SP
020 3318 8900

www.mundays.com

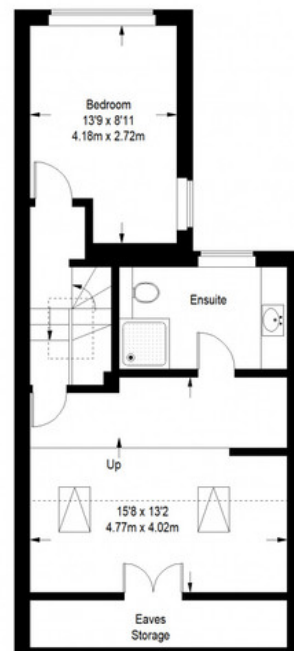
Choumert Grove



Ground Floor = 704 sq ft



First Floor = 513 sq ft



Second Floor = 521 sq ft

= Reduced headroom below 1.5 m / 5'0"

Approximate Gross Internal Area
 GROUND FLOOR = 704 sq ft / 65.40 sq m
 FIRST FLOOR = 513 sq ft / 47.66 sq m
 SECOND FLOOR (Excluding Reduced Headroom/ Eaves Storage) = 373 sq ft / 34.65 sq m
 (Reduced Headroom/ Eaves Storage) = 148 sq ft / 13.75 sq m
 Total = 1738 sq ft / 161.46 sq m



This plan is for layout guidance only. Not drawn to scale unless stated. Windows and door openings are approximate. Whilst every care is taken in the preparation of this plan, please check all dimensions, shapes and compass bearings before making any decisions reliant upon them. (ID357409)