

MUNDAY'S

Amott Road, Peckham Rye

£975,000



Best and final offers invited by 5pm, Wednesday 15 January 2020.

Three bed end of terrace Victorian house of 1132 square feet that's close to Peckham Rye Station and Bellenden Road (9 minutes by foot to both). A south-facing garden of over 50 feet completes the attractive package. Freehold.

*Munday's Estate Agents Ltd.*  
2 Mary Boast Walk  
London SE5 8SP  
020 3318 8900

[www.mundays.com](http://www.mundays.com)

MUNDAY'S

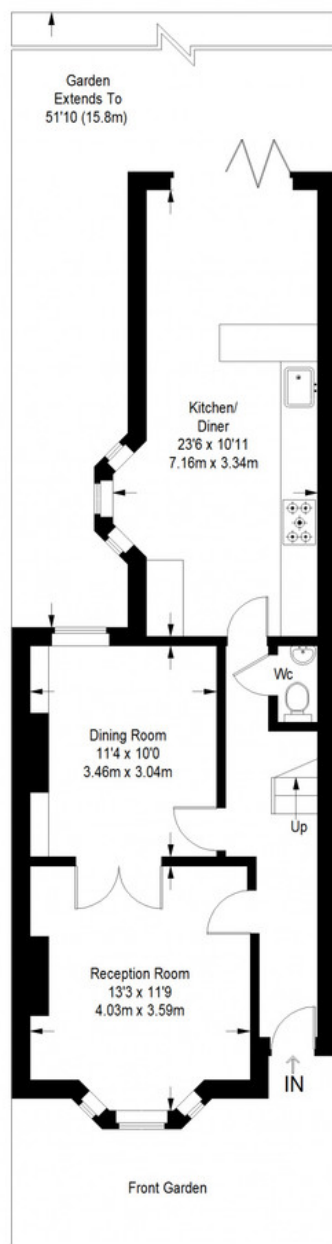


Munday's Estate Agents Ltd.  
2 Mary Boast Walk  
London SE5 8SP  
020 3318 8900

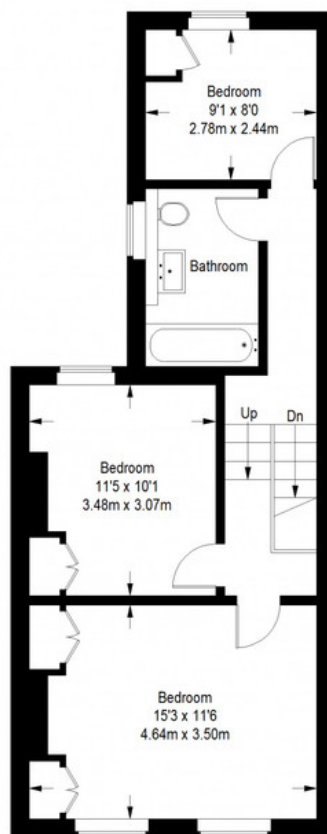
[www.mundays.com](http://www.mundays.com)



## Amott Road



**Ground Floor = 598 sq ft**



**First Floor = 534 sq ft**

Approximate Gross Internal Area  
GROUND FLOOR = 598 sq ft / 55.55 sq m  
FIRST FLOOR = 534 sq ft / 49.61 sq m  
Total = 1132 sq ft / 105.16 sq m



This plan is for layout guidance only. Not drawn to scale unless stated. Windows and door openings are approximate. Whilst every care is taken in the preparation of this plan, please check all dimensions, shapes and compass bearings before making any decisions reliant upon them. (ID357409)