

MUNDAY'S

Pioneer Centre, Frobisher Place,
Nunhead

£800,000



Offers in excess of £800,000.

This is not a holiday brochure. This could be your actual life! A two double bed, two bath duplex apartment of circa 1000 square feet with direct access to your own sunny terrace, within an iconic private gated complex, set in landscaped grounds with parking, plus swimming and tennis facilities for residents.

The Pioneer Centre – let us introduce you – is a Grade II* listed Modernist building designed by Sir Owen William, famously described by Bauhaus founder Walter Gropius as “Britain’s best new building ... an oasis of glass in a desert of brick” (1935).

It was the second of two SE15 premises to host “The Peckham Experiment’: a family health club designed to promote good health and well-being to prevent illness. Medical doctors Innes Pearse and George Scott

Munday's Estate Agents Ltd.
2 Mary Boast Walk
London SE5 8SP
020 3318 8900

www.mundays.com

boutique residences in the late nineties, I

MUNDAY'S

Munday's Estate Agents Ltd.
2 Mary Boast Walk
London SE5 8SP
020 3318 8900

www.mundays.com

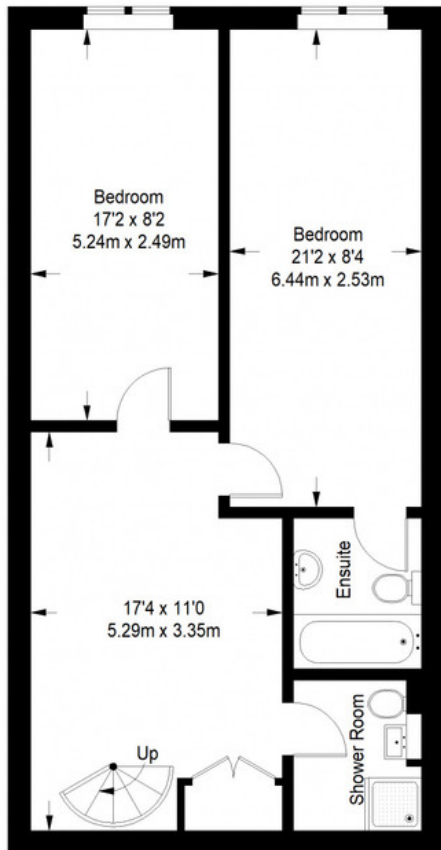
MUNDAY'S



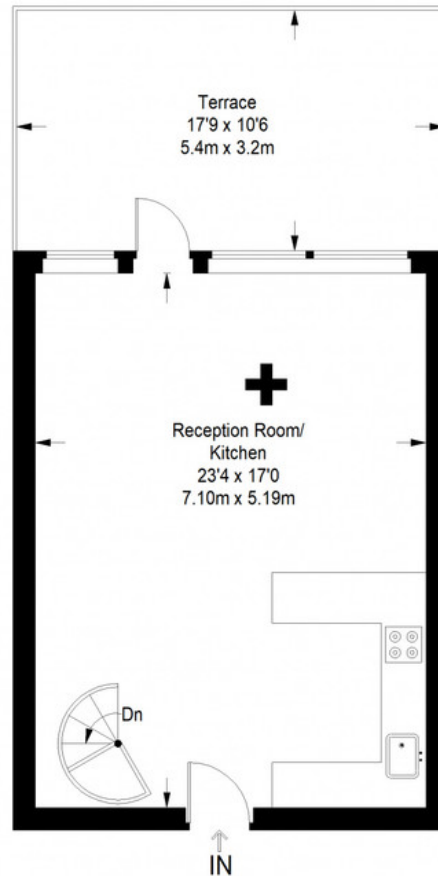
Munday's Estate Agents Ltd.
2 Mary Boast Walk
London SE5 8SP
020 3318 8900

www.mundays.com

Pioneer Centre



Ground Floor = 596 sq ft



First Floor = 401 sq ft

Approximate Gross Internal Area
GROUND FLOOR = 596 sq ft / 55.37 sq m
FIRST FLOOR = 401 sq ft / 37.25 sq m
Total = 997 sq ft / 92.62 sq m



This plan is for layout guidance only. Not drawn to scale unless stated. Windows and door openings are approximate. Whilst every care is taken in the preparation of this plan, please check all dimensions, shapes and compass bearings before making any decisions reliant upon them. (ID357409)