

Peckham Rye, Peckham

£450,000



Offers in excess of £450,000.

A former brick-built bank building of Victorian-era hosts this delightful one bedroom apartment set at ground floor level, with a cool layout, a Freehold-share, and its own front door.

The location impresses as well: directly opposite Peckham Rye Park and Common's 113 acres. Swoon! For train travel, Peckham Rye Station is a 10 minute walk, and it is 14 to East Dulwich Station. Both are Fare Zone 2.

Your local high street areas are found on Rye Lane, Lordship Lane, East Dulwich Road, Forest Hill Road and Nunhead Lane.

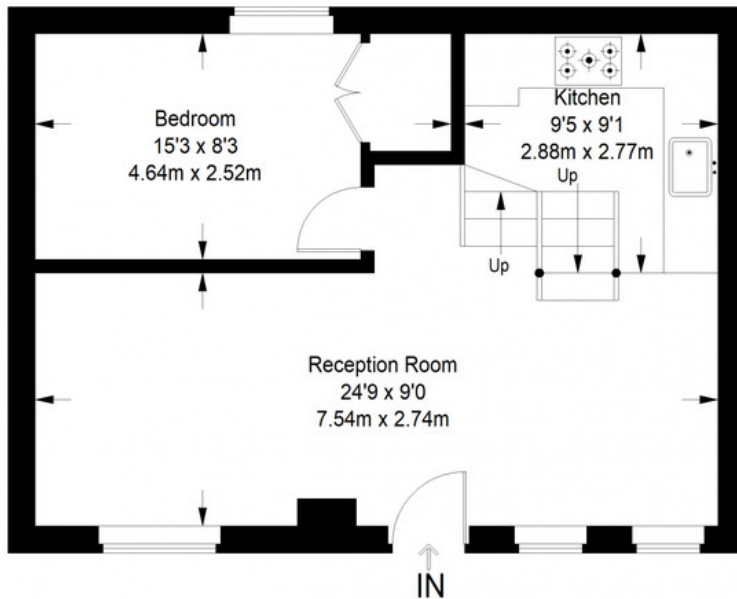
MUNDAY'S



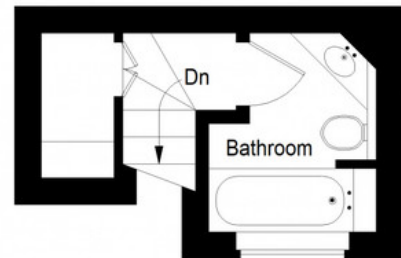
Munday's Estate Agents Ltd.
2 Mary Boast Walk
London SE5 8SP
020 3318 8900

www.mundays.com

Peckham Rye



Ground Floor = 445 sq ft



Mezzanine = 76 sq ft

Approximate Gross Internal Area
 GROUND FLOOR = 445 sq ft / 41.34 sq m
 MEZZANINE = 76 sq ft / 7.06 sq m
 Total = 521 sq ft / 48.40 sq m



This plan is for layout guidance only. Not drawn to scale unless stated. Windows and door openings are approximate. Whilst every care is taken in the preparation of this plan, please check all dimensions, shapes and compass bearings before making any decisions reliant upon them. (ID357409)