

MUNDAY'S

Peckham Road, Camberwell

£385,000



One bedroom bright and white top (third) floor purpose-built Victorian flat within 'Leaf House', with a large communal roof terrace.

Find it in a fab spot between Peckham and Camberwell and their respective stations (walk 15 minutes to Peckham Rye or Denmark Hill stations). You also have loads of good bus routes to choose from.

*Munday's Estate Agents Ltd.*  
2 Mary Boast Walk  
London SE5 8SP  
020 3318 8900

[www.mundays.com](http://www.mundays.com)

MUNDAY'S

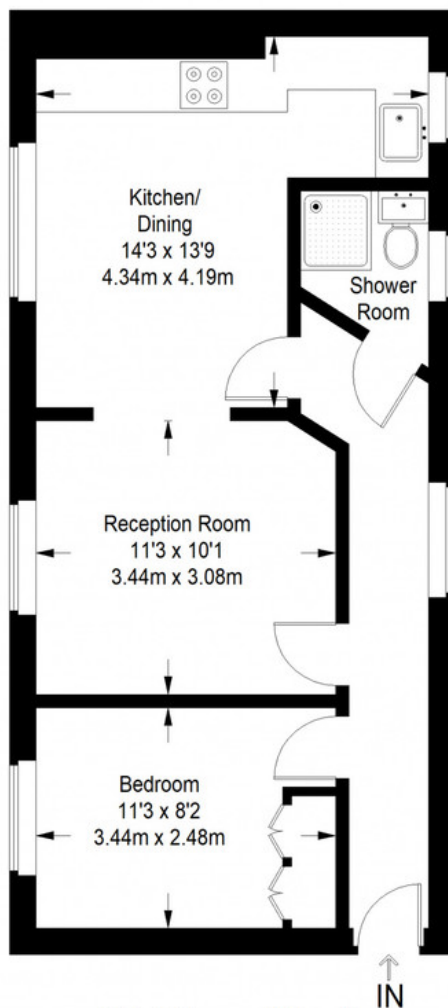


*Munday's Estate Agents Ltd.*  
2 Mary Boast Walk  
London SE5 8SP  
020 3318 8900

[www.mundays.com](http://www.mundays.com)



## Leaf House



**Third Floor = 485 sq ft**

Approximate Gross Internal Area  
THIRD FLOOR = 485 sq ft / 45.06 sq m  
Total = 485 sq ft / 45.06 sq m



This plan is for layout guidance only. Not drawn to scale unless stated. Windows and door openings are approximate. Whilst every care is taken in the preparation of this plan, please check all dimensions, shapes and compass bearings before making any decisions reliant upon them. (ID357409)