

Peckham Hill Street, Peckham

£899,950



Characterful and well turned out early-Victorian 'two up, two down' flat-fronted cottage - of 933 square feet - with generous front (west-facing) and rear (east-facing) gardens.

Walk just 13 minutes to Peckham Rye Station, or 15 to Queens Road Peckham Station. Both are Fare Zone 2 and on the Overground/Windrush line, as well as offering mainline services.

You are also well set up for bus links (it is a 15 minute bus ride to Elephant & Castle for the tube). And you are super close to Burgess Park (fab Saturday parkrun here!) and the Surrey Canal path.

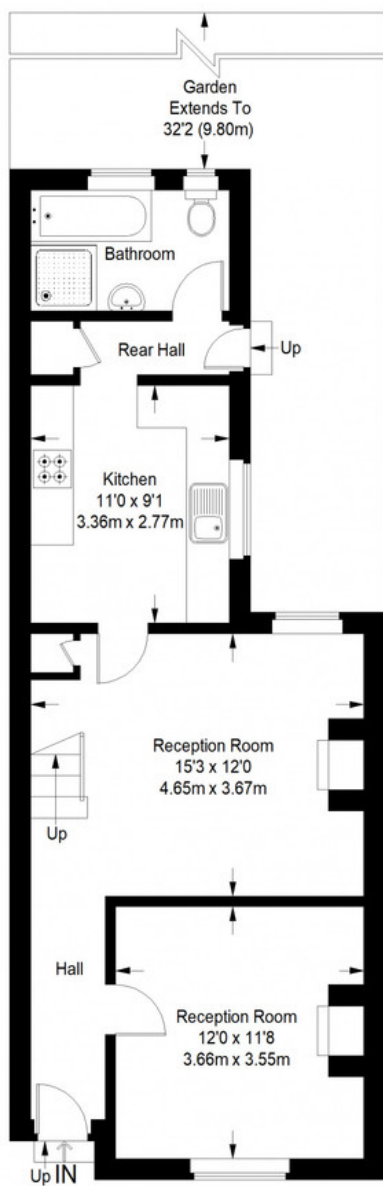
MUNDAY'S



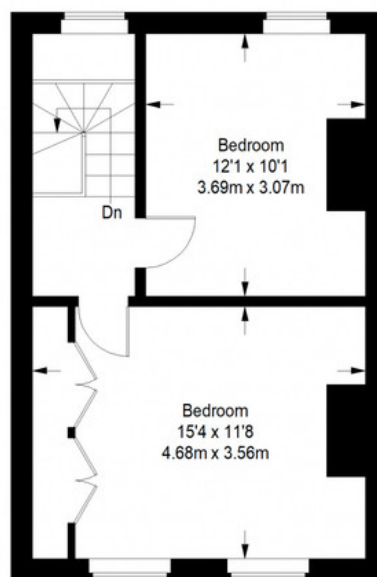
Munday's Estate Agents Ltd.
2 Mary Boast Walk
London SE5 8SP
020 3318 8900

www.mundays.com

Peckham Hill Street



Ground Floor = 559 sq ft



First Floor = 374 sq ft

Approximate Gross Internal Area
 GROUND FLOOR = 559 sq ft / 51.93 sq m
 FIRST FLOOR = 374 sq ft / 34.74 sq m
 Total = 933 sq ft / 86.68 sq m



This plan is for layout guidance only. Not drawn to scale unless stated. Windows and door openings are approximate. Whilst every care is taken in the preparation of this plan, please check all dimensions, shapes and compass bearings before making any decisions reliant upon them. (ID357409)