

MUNDAY'S

Peckham Hill Street, Peckham

£750,000



Who doesn't love a garden flat? This two double bedroom one has been beautifully architecturally-treated by its architect owner. A large and sunny SW-facing back garden and gorgeous garden studio/home office complete the package.

The pleasing home is found on the ground floor of a delightful double-fronted period house. Access to the garden is both via the kitchen/dining room and via the second bedroom.

Walk just 12 minutes for Peckham Rye Station (or 15 to QRP Station). On-street parking is unrestricted.

*Munday's Estate Agents Ltd.*  
2 Mary Boast Walk  
London SE5 8SP  
020 3318 8900

[www.mundays.com](http://www.mundays.com)



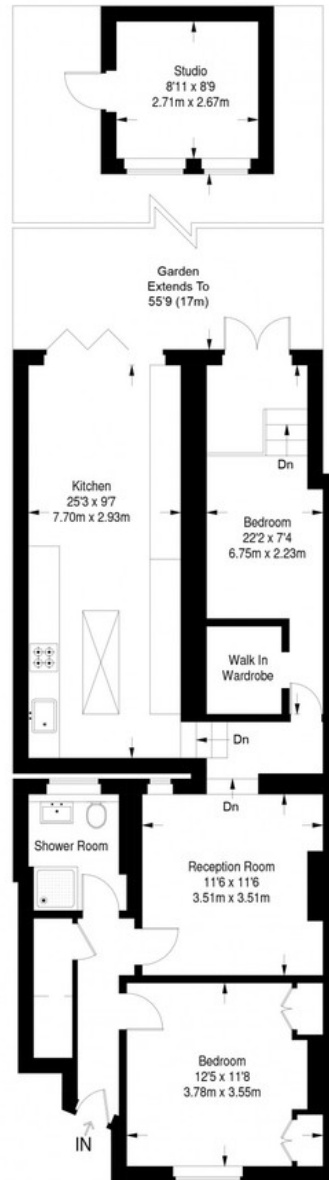
MUNDAY'S



*Munday's Estate Agents Ltd.*  
2 Mary Boast Walk  
London SE5 8SP  
020 3318 8900

[www.mundays.com](http://www.mundays.com)

## Peckham Hill Street



**Ground Floor = 907 sq ft**

Approximate Gross Internal Area  
GROUND FLOOR = 907 sq ft / 84.33 sq m  
Total = 907 sq ft / 84.33 sq m

This plan is for layout guidance only. Not drawn to scale unless stated. Windows and door openings are approximate. Whilst every care is taken in the preparation of this plan, please check all dimensions, shapes and compass bearings before making any decisions reliant upon them. (ID357409)