

MUNDAY'S

Peckham Grove, Peckham

£695,000



Large, light and lovely warehouse-style three bedroom apartment (two big doubles, one big single) with a sleek bathroom and independent guest w.c. as well, high ceilings, exposed brickwork, and an east/west orientation. The cherry on top is a private designated parking space just outside.

Find your new architect-owned pad in a smart low-rise residential setting, in a notably quiet spot between the town centres of Peckham and Camberwell, really close to Burgess Park's delightful 56 hectares (lake, cafe, tennis and sports courts and more).

Peckham and Camberwell and their respective stations (Peckham Rye and Denmark Hill) are both a 15-20 minute walk, for Windrush and regular rail services.

*Munday's Estate Agents Ltd.*  
2 Mary Boast Walk  
London SE5 8SP  
020 3318 8900

[www.mundays.com](http://www.mundays.com)

MUNDAY'S

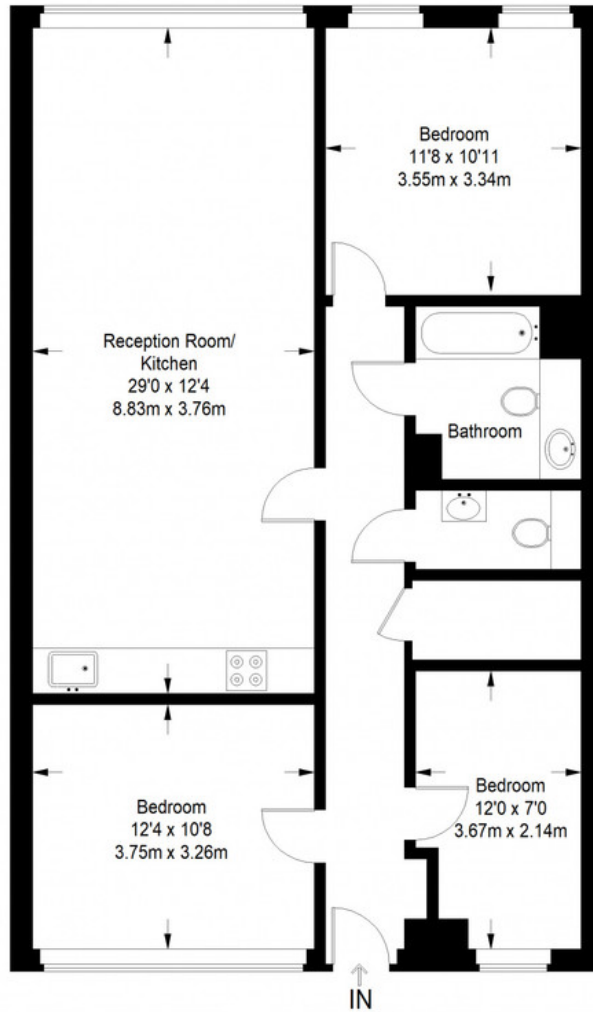


*Munday's Estate Agents Ltd.*  
2 Mary Boast Walk  
London SE5 8SP  
020 3318 8900

[www.mundays.com](http://www.mundays.com)

**MUNDAY'S**

## South City Court



**Ground Floor = 963 sq ft**

Approximate Gross Internal Area  
GROUND FLOOR = 963 sq ft / 89.46 sq m  
Total = 963 sq ft / 89.46 sq m

This plan is for layout guidance only. Not drawn to scale unless stated. Windows and door openings are approximate. Whilst every care is taken in the preparation of this plan, please check all dimensions, shapes and compass bearings before making any decisions reliant upon them. (ID357409)

*Munday's Estate Agents Ltd.*  
2 Mary Boast Walk  
London SE5 8SP  
020 3318 8900

[www.mundays.com](http://www.mundays.com)