

Oxenford Street, Peckham Rye

£575,000



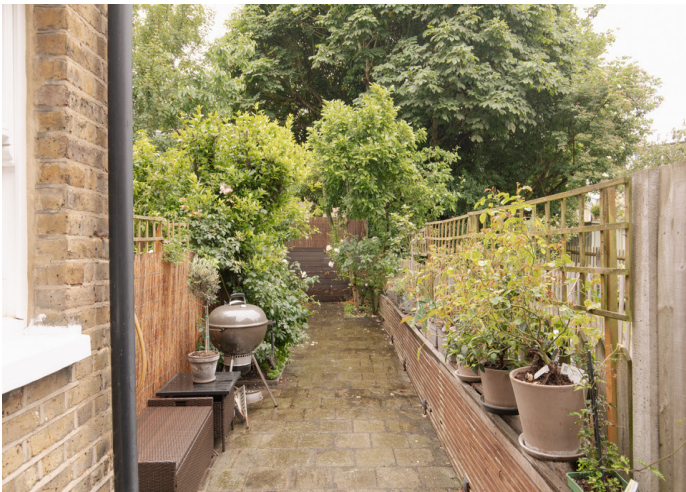
Classy, characterful and spacious one bedroom Victorian maisonette with a sunny south-facing garden (with direct access, lighting, power, and fitted seating). Residents have permit-parking.

Our seller has already agreed an onward purchase, so this is a chain-complete scenario.

The location is a popular, oft-requested tree-lined residential street, pleasingly placing you a seven minute walk from East Dulwich Station, and 12 from Peckham Rye Station (both are Fare Zone 2). You are also close to Bellenden Road and to Grove Vale and Lordship Lane.



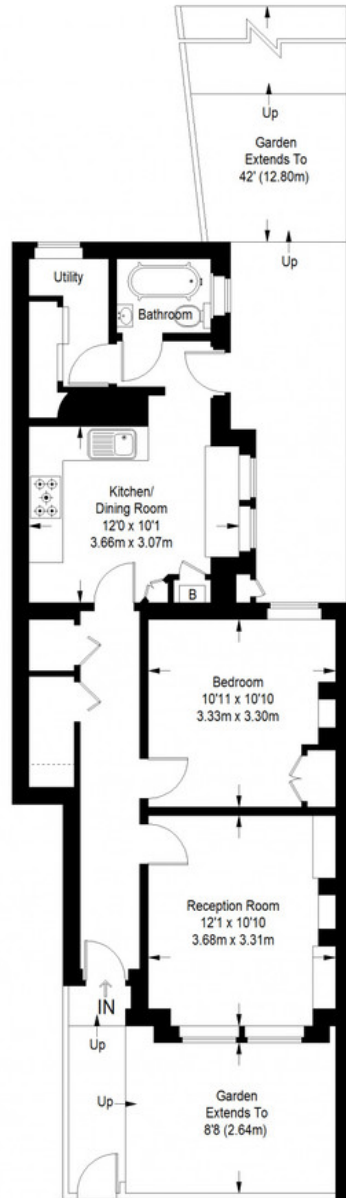
MUNDAY'S



*Munday's Estate Agents Ltd.*  
2 Mary Boast Walk  
London SE5 8SP  
020 3318 8900

[www.mundays.com](http://www.mundays.com)

## Oxford Street



**Ground Floor = 594 sq ft**

Approximate Gross Internal Area  
GROUND FLOOR = 594 sq ft / 55.18 sq m  
Total = 594 sq ft / 55.18 sq m



This plan is for layout guidance only. Not drawn to scale unless stated. Windows and door openings are approximate. Whilst every care is taken in the preparation of this plan, please check all dimensions, shapes and compass bearings before making any decisions reliant upon them. (ID357409)