

MUNDAY'S

Ommaney Road, New Cross

£435,000



Large, light and lovely one bedroom (raised ground/hall floor) Victorian conversion flat of 607 square feet, within New Cross's Telegraph Hill Conservation Area, close to New Cross Gate Station (walk eight minutes).

Munday's Estate Agents Ltd.
2 Mary Boast Walk
London SE5 8SP
020 3318 8900

www.mundays.com

MUNDAY'S

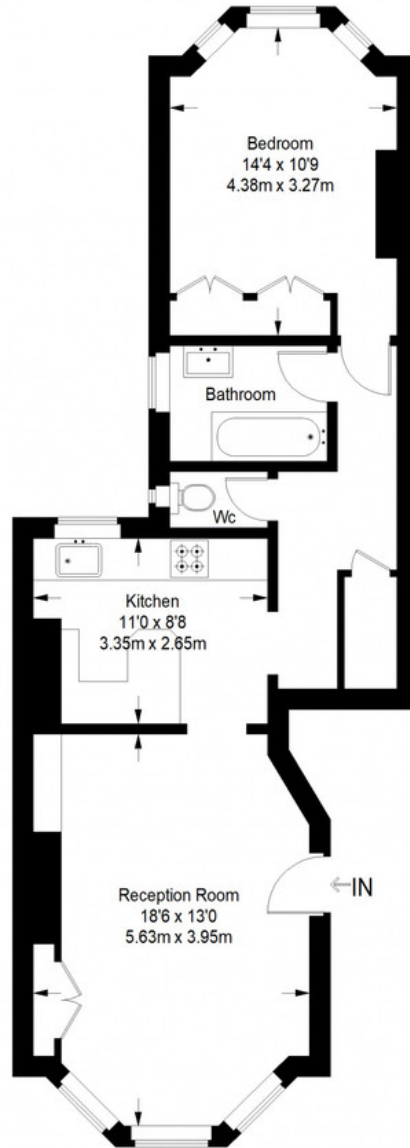


Munday's Estate Agents Ltd.
2 Mary Boast Walk
London SE5 8SP
020 3318 8900

www.mundays.com

MUNDAY'S

Ommaney Road



Ground Floor = 607 sq ft

Approximate Gross Internal Area
GROUND FLOOR = 607 sq ft / 56.39 sq m
Total = 607 sq ft / 56.39 sq m



This plan is for layout guidance only. Not drawn to scale unless stated. Windows and door openings are approximate. Whilst every care is taken in the preparation of this plan, please check all dimensions, shapes and compass bearings before making any decisions reliant upon them. (ID357409)

Munday's Estate Agents Ltd.
2 Mary Boast Walk
London SE5 8SP
020 3318 8900

www.mundays.com