

Oakhurst Grove, East Dulwich

£550,000



Sleek two bedroom first floor period conversion flat of 579 square feet, with a new lease of 125 years. Your newly-renovated home will be ready for you in February.

The location is a pretty and peaceful one-way residential street in prime East Dulwich/Peckham Rye borderland - close to Goose Green, Peckham Rye Park and Common, Lordship Lane, and to both East Dulwich and Peckham Rye stations (walk 12 and 14 minutes to these respectively).

Pleasingly, the well-established boutique developer is giving the buyer welcome freedom to customise the final design - you can choose the finishing touches you want - including kitchen (fronts and handles), worktops and splash back, flooring, wall colours, wardrobes and storage, window shutters, flooring, tiling, bike storage and more. Please ask us for more details.

MUNDAY'S

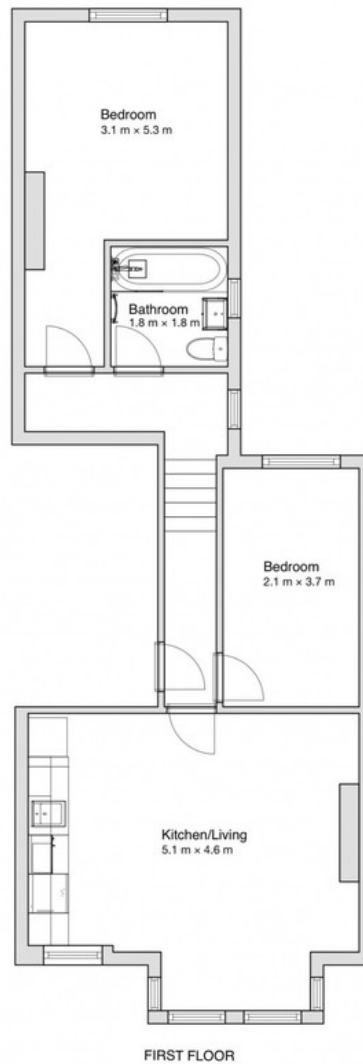


Munday's Estate Agents Ltd.
2 Mary Boast Walk
London SE5 8SP
020 3318 8900

www.mundays.com

MUNDAY'S

Oakhurst Grove, SE22
First Floor Apartment



Approximate Gross Internal Area
First Floor = 579 sqft / 54 sqm

Whilst every care is taken in the preparation of these plans and images, please check all dimensions, shapes and compass bearings before making any decision reliant upon them.

Munday's Estate Agents Ltd.
2 Mary Boast Walk
London SE5 8SP
020 3318 8900

www.mundays.com