

## Oakhurst Grove, East Dulwich

£845,000



Architecturally-treated two double bedroom ground floor garden pad, set at the bottom of a large semi-detached Victorian townhouse.

Welcome features include a large garden studio (at the foot of your 40 foot east-facing garden), side access, and off-street parking.

The location? Is a pretty residential street in East Dulwich/Peckham Rye borderland - close to Goose Green, Peckham Rye Park and Common, Lordship Lane, and to both East Dulwich and Peckham Rye stations (walk 11 and 13 minutes to these respectively).

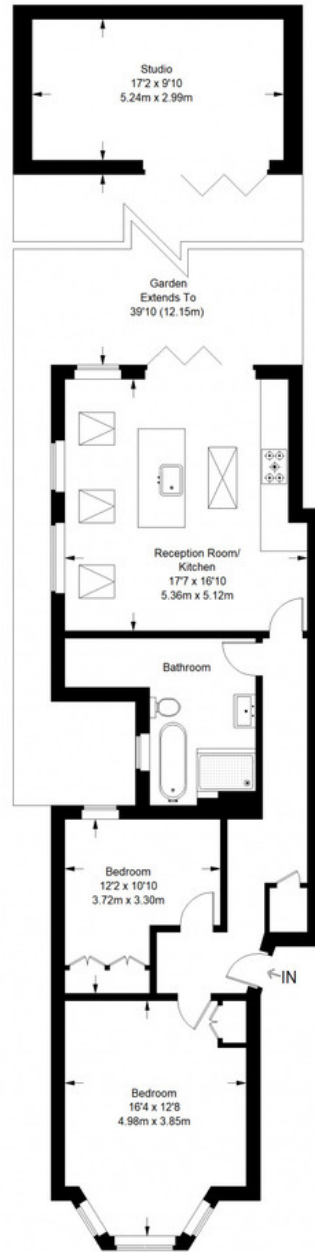
MUNDAY'S



*Munday's Estate Agents Ltd.*  
2 Mary Boast Walk  
London SE5 8SP  
020 3318 8900

[www.mundays.com](http://www.mundays.com)

## Oakhurst Grove



Ground Floor = 842 sq ft

Approximate Gross Internal Area  
GROUND FLOOR = 842 sq ft / 78.22 sq m  
STUDIO = 179 sq ft / 16.63 sq m  
Total = 1021 sq ft / 94.85 sq m



This plan is for layout guidance only. Not drawn to scale unless stated. Windows and door openings are approximate. Whilst every care is taken in the preparation of this plan, please check all dimensions, shapes and compass bearings before making any decisions reliant upon them. (ID357409)