

MUNDAY'S

Nutbrook Street, Peckham Rye

£1,500,000



Offers in excess of £1,500,000.

Architecturally-treated five bedroom, two bathroom (plus downstairs w.c.) Victorian mid-terrace house over three floors (including a deftly-done loft extension) with a south-facing garden of circa 40 feet, complete with garden studio with shed section.

An ace house and the location is a belter, too! Your new street is of the tree-lined residential variety, and you are just eight minutes by foot from Peckham Rye Station, six minutes from Bellenden Road, and five from The Belham Primary School. ?

Munday's Estate Agents Ltd.
2 Mary Boast Walk
London SE5 8SP
020 3318 8900

www.mundays.com

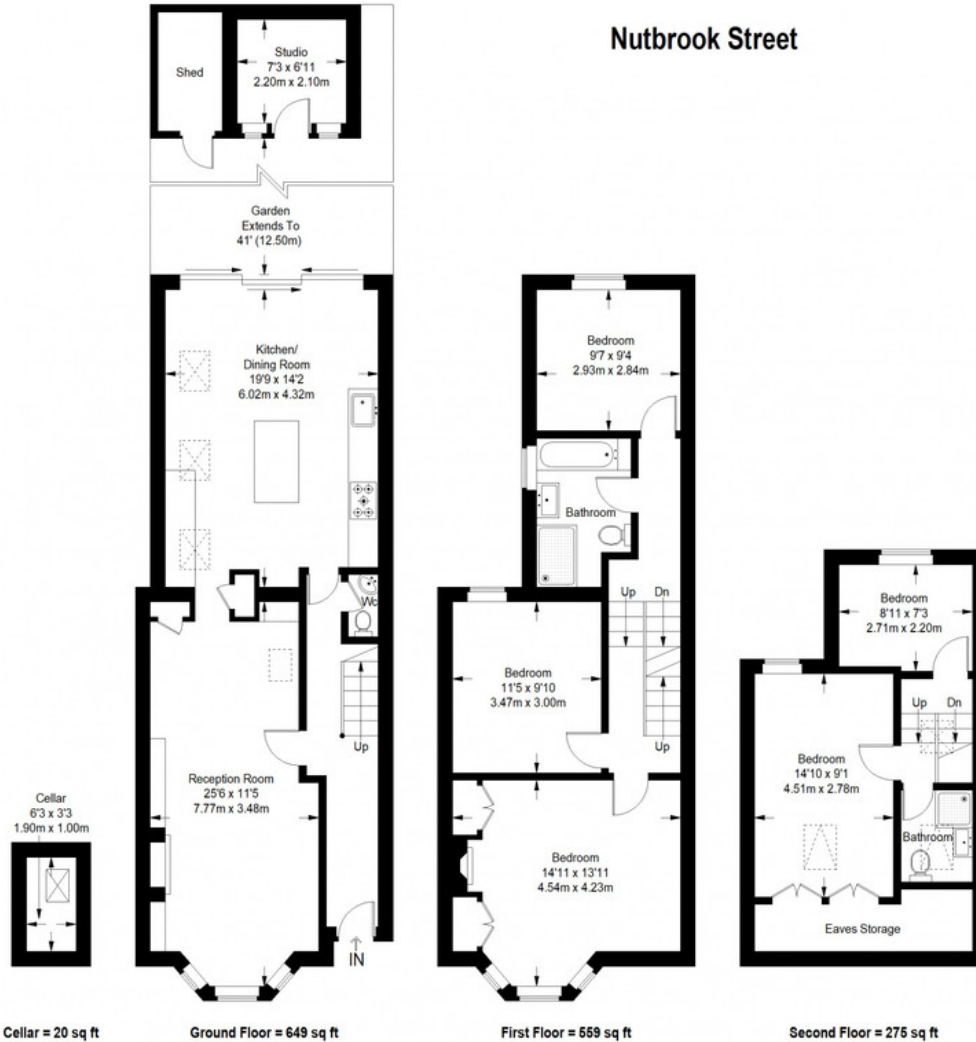
MUNDAY'S



Munday's Estate Agents Ltd.
2 Mary Boast Walk
London SE5 8SP
020 3318 8900

www.mundays.com

Nutbrook Street



Approximate Gross Internal Area

GROUND FLOOR = 649 sq ft / 60.29 sq m

FIRST FLOOR = 559 sq ft / 51.93 sq m

SECOND FLOOR = 275 sq ft / 25.55 sq m

STUDIO = 51 sq ft / 4.74 sq m

Total (including studio, excluding shed) = 1534 sq ft / 142.51 sq m

This plan is for layout guidance only. Not drawn to scale unless stated. Windows and door openings are approximate. Whilst every care is taken in the preparation of this plan, please check all dimensions, shapes and compass bearings before making any decisions reliant upon them. (ID357409)