

## Nunhead Grove, Nunhead

£935,000



Classic and well-presented three double bedroom Victorian terrace on a quiet and leafy side street, placing you just an eight minute walk from Nunhead Station, and three minutes from Nunhead Green Conservation Area (Nunhead Lane is just at the end of your street - it takes in Nunhead's cute independent high street plus village-style green) and beautiful Nunhead Cemetery. A generous garden of over 45 feet seals the deal.

Queens Road Peckham Station is a 15 minute walk, and Peckham Rye Station is yours in 16. Also close to you is Peckham Rye Park and Common - walk here in seven minutes.



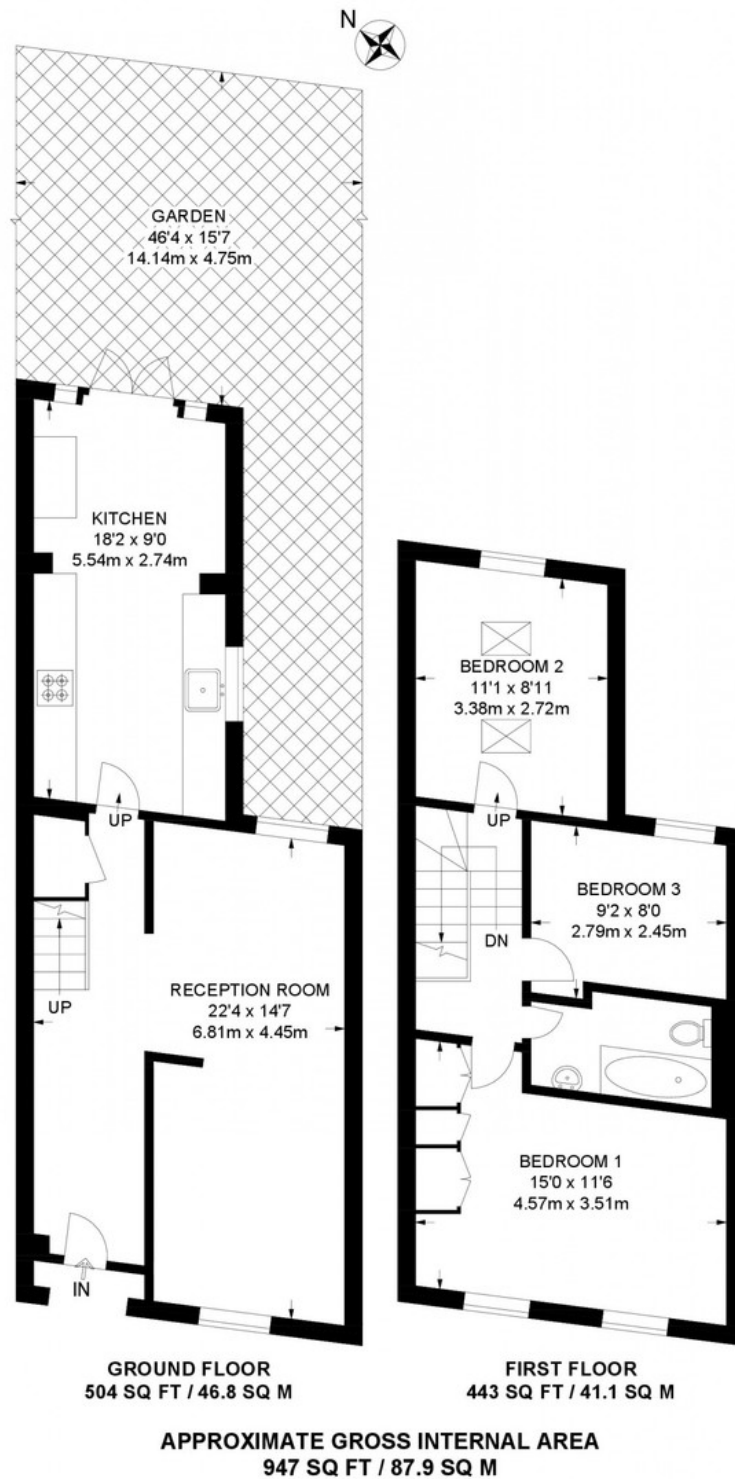
MUNDAY'S



*Munday's Estate Agents Ltd.*  
2 Mary Boast Walk  
London SE5 8SP  
020 3318 8900

[www.mundays.com](http://www.mundays.com)

**MUNDAY'S**



*Munday's Estate Agents Ltd.*  
2 Mary Boast Walk  
London SE5 8SP  
020 3318 8900

[www.mundays.com](http://www.mundays.com)