

MUNDAY'S

Northway Road, Camberwell

£750,000



Who doesn't love a south-facing garden flat? Feast your eyes upon this classy two double bedroom Victorian conversion flat which is mere steps from Ruskin Park, and has a Freehold-share.

Walk just six minutes to Loughborough Junction Station, and eight to Denmark Hill Station.

*Munday's Estate Agents Ltd.*  
2 Mary Boast Walk  
London SE5 8SP  
020 3318 8900

[www.mundays.com](http://www.mundays.com)



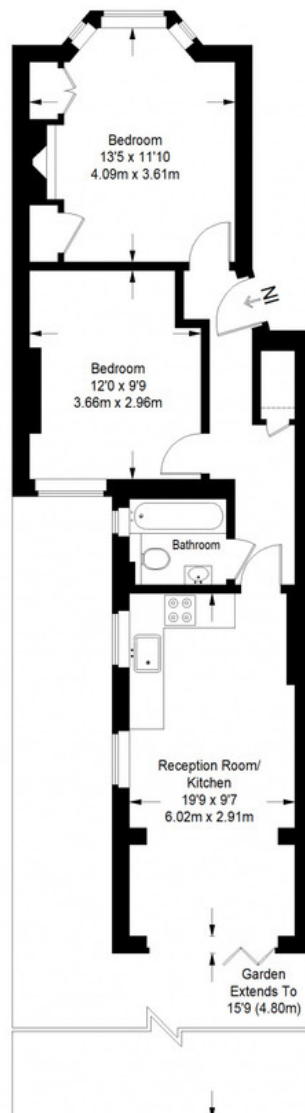
MUNDAY'S



Munday's Estate Agents Ltd.  
2 Mary Boast Walk  
London SE5 8SP  
020 3318 8900

[www.mundays.com](http://www.mundays.com)

## Northway Road



**Ground Floor = 579 sq ft**

Approximate Gross Internal Area  
GROUND FLOOR = 579 sq ft / 53.79 sq m



This plan is for layout guidance only. Not drawn to scale unless stated. Windows and door openings are approximate. Whilst every care is taken in the preparation of this plan, please check all dimensions, shapes and compass bearings before making any decisions reliant upon them. (ID357409)