

Nightingale Grove, Hither Green

£550,000



Big, smart and modern three bedroom ground floor apartment of 1076 square feet (yep - the size of your average Victorian terrace!) with its own front door, both bath and shower rooms, and a huge and west-facing private garden too.

Walk just four minutes to Hither Green Station (Fare Zone 3). Leasehold.

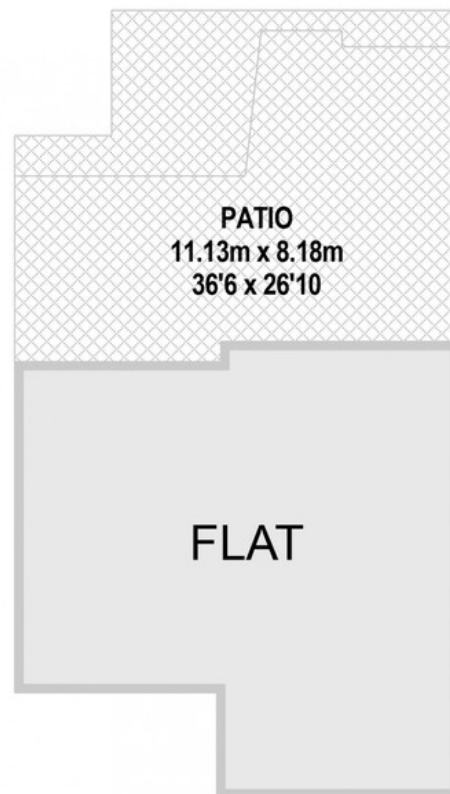
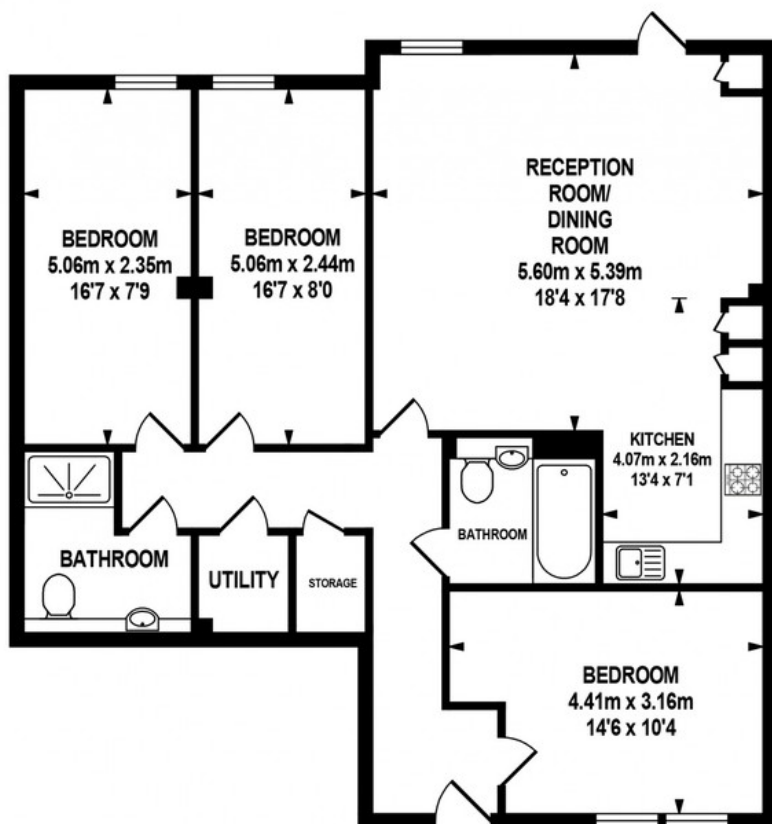
MUNDAY'S



Munday's Estate Agents Ltd.
2 Mary Boast Walk
London SE5 8SP
020 3318 8900

www.mundays.com

MUNDAY'S



GROUND FLOOR
APPROX. FLOOR
AREA 99.99 SQ.M.
(1076 SQ.FT.)



SITE PLAN

TOTAL APPROX.FLOOR AREA 99.99 SQ.M. (1076 SQ.FT.)

Whilst every effort is made to accurately reproduce these floor plans, measurements are approximate, not to scale and for illustrative purposes only.
© Dulwich Energy Assessors Ltd. www.dea-ltd.co.uk

Munday's Estate Agents Ltd.
2 Mary Boast Walk
London SE5 8SP
020 3318 8900

www.mundays.com